



AMERICAN UNIVERSITY
WASHINGTON, DC

Capital Projects Update

September 24, 2015



Capital Projects Work in Progress



AMERICAN UNIVERSITY Capital Projects Update

WCL - Tenley



Terrace/roof deck and Yuma Wing



WCL - Tenley



Garage entrance and Nebraska Wing



AMERICAN UNIVERSITY Capital Projects Update

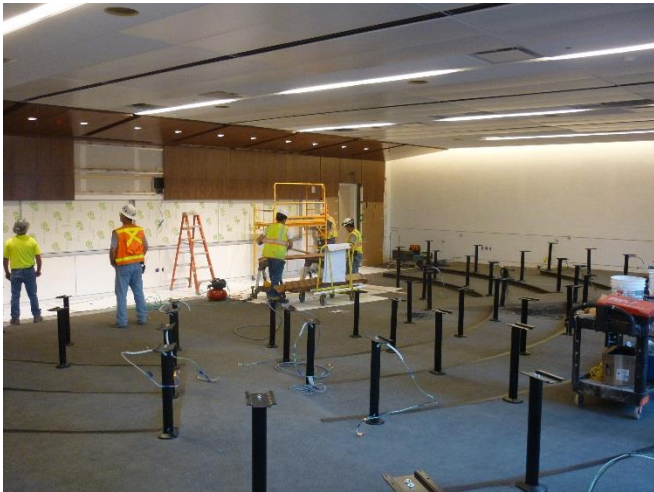
WCL - Tenley



Yuma Wing



Courtyard



5 Tiered Classrooms



The Commons



Six Month Look-Ahead Schedule						
Phase	2015				2016	
	September	October	November	December	January	February
Interior Fitout	█					
Capital Hall Renovation	█	█	█			
Utility, Site, & Landscape Work	█					
Functionoanal Testing & Turnover	█	█	█			
Yuma/Nebraska Completion		◆				
Capital Hall Completion			◆			
Move-in			█	█	█	

- Community update meeting May 15th



East Campus



Garage construction



Façade prefabrication



East Campus Project
Six Month Look-Ahead Schedule

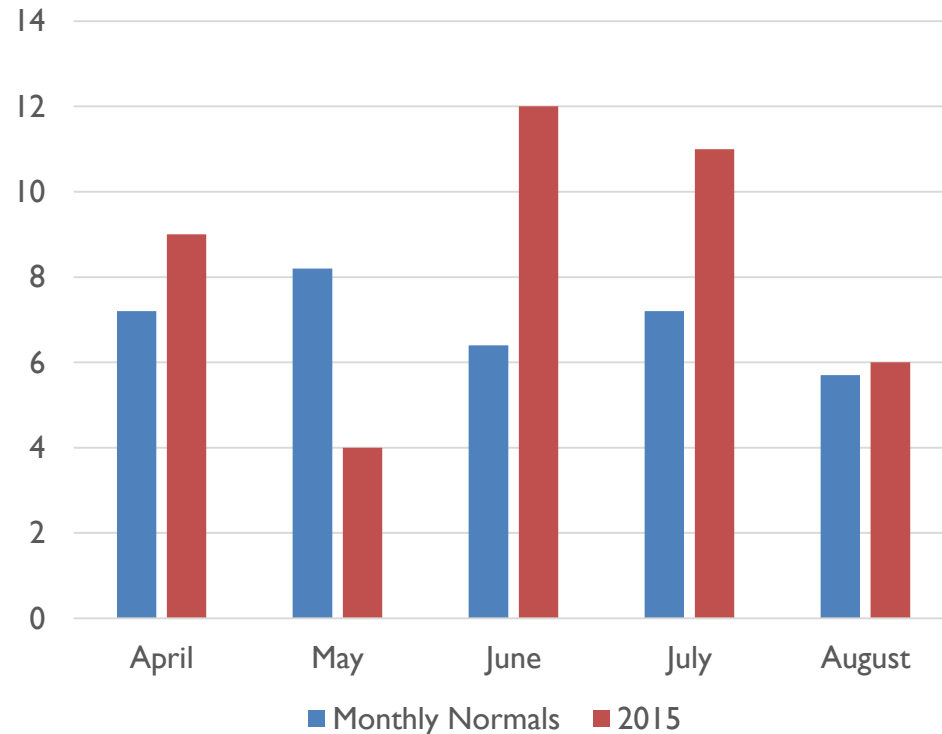
Phase	2015				2016	
	September	October	November	December	January	February
Offsite - Precast façade fabrication	[Blue bar spanning Sep, Oct, Nov, Dec, Jan]					
Foundations & Garage Structure	[Blue bar spanning Sep, Oct, Nov, Dec]					
Below slab utilities	[Blue bar in Sep]					
Above grade structure		[Blue bar spanning Oct, Nov, Dec, Jan, Feb]				
Precast façade Installation				[Blue bar spanning Dec, Jan, Feb]		
Interior MEP			[Blue bar spanning Nov, Dec, Jan, Feb]			

- Community update meeting September 17th



Saturday Work

Daily Precipitation (days)



- 11.2 days of precipitation more than normal
- 6.01 total inches of precipitation more than normal
- 33 total work days impacted by precipitation
- 44 Saturdays remaining in the schedule

Source: NOAA - Dalecarlia Reservoir Station



East Campus



April 2015



May 2015



June 2015



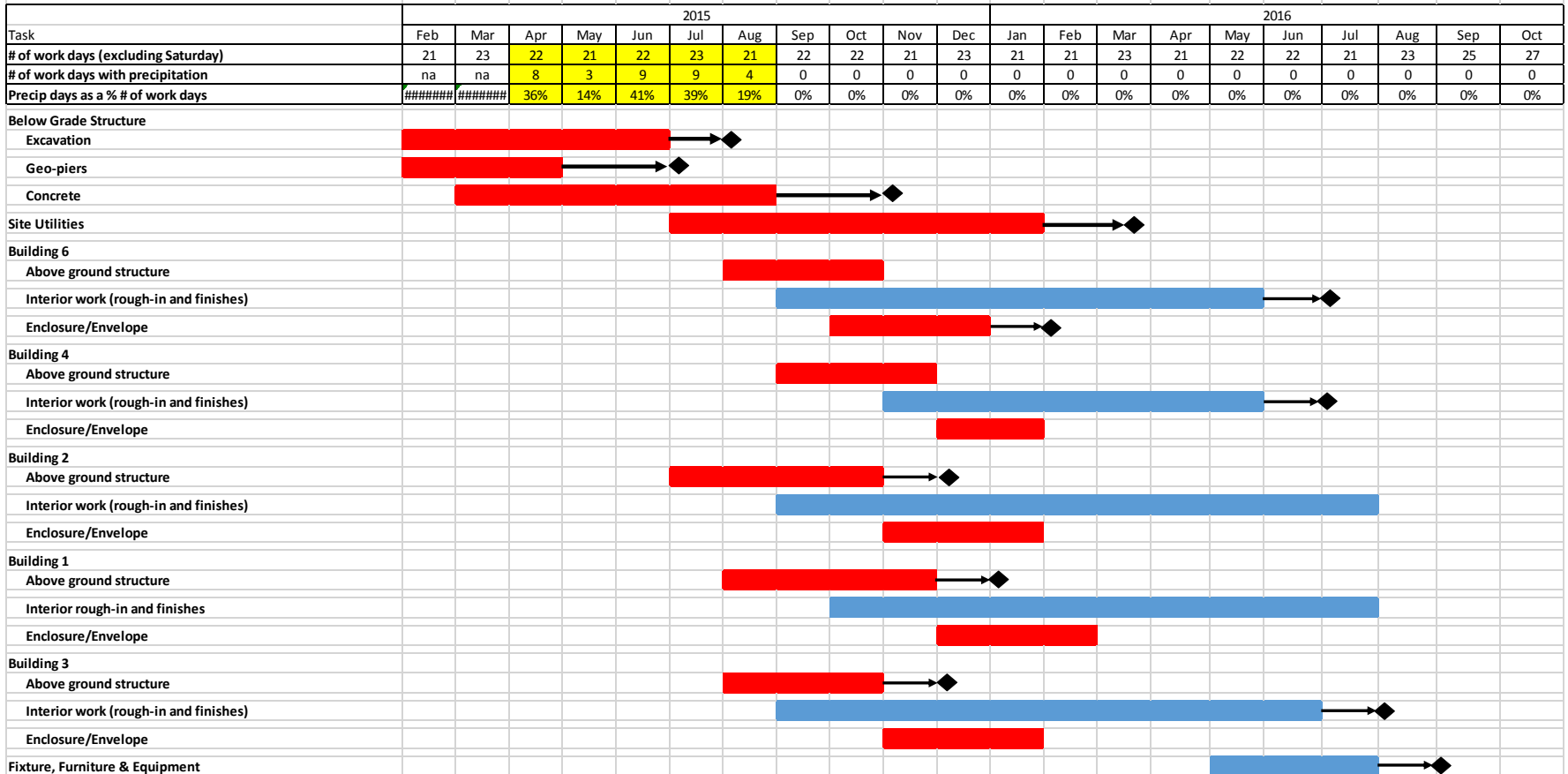
July 2015



American University - East Campus Project Remaining Schedule

Legend:

- Exterior work activities potentially impacted by weather
- Interior work activities not impacted by weather
- Revised completion date of task





Science Building

- Feasibility study to validate scope, schedule and budget completed
- Commencing Schematic Design
- Further processing



- Soliciting proposals for architectural and engineering services
- Validating scope, schedule and budget
- Occupants