



AMERICAN UNIVERSITY
WASHINGTON, DC

Capital Projects Update

September 22, 2014



Capital Projects Work in Progress



Terrace/roof deck and Yuma Wing

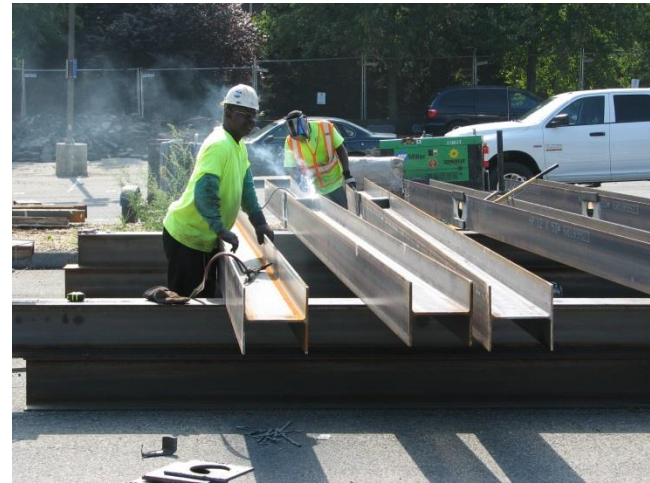


Garage entrance and Nebraska Wing



Six Month Look-Ahead Schedule

Phase	2014				2015	
	Sept	Oct	Nov	Dec	Jan	Feb
Concrete Structure	■					
Exterior Façade			■			
Interior Fitout			■			
Capital Hall Renovation	■					



Shoring System - Soldier Pile Fabrication

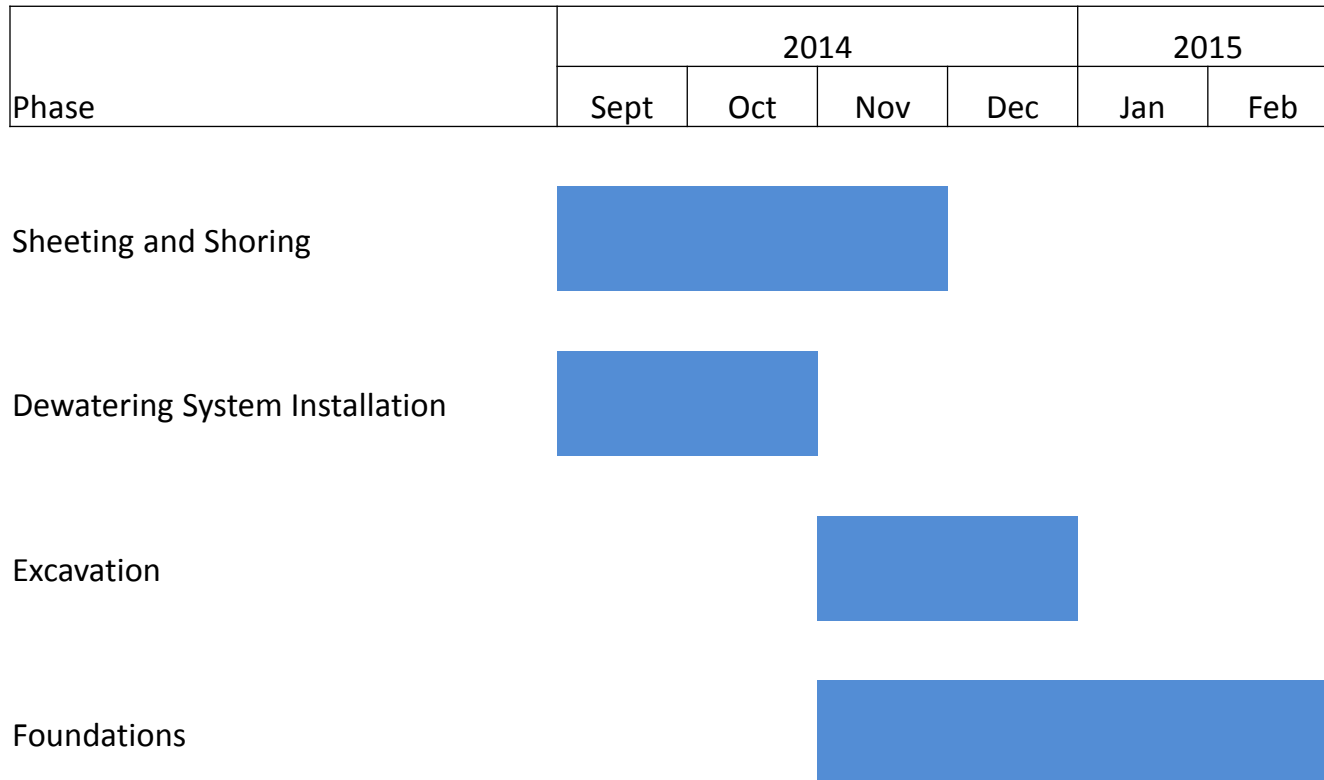


Soldier Pile installation



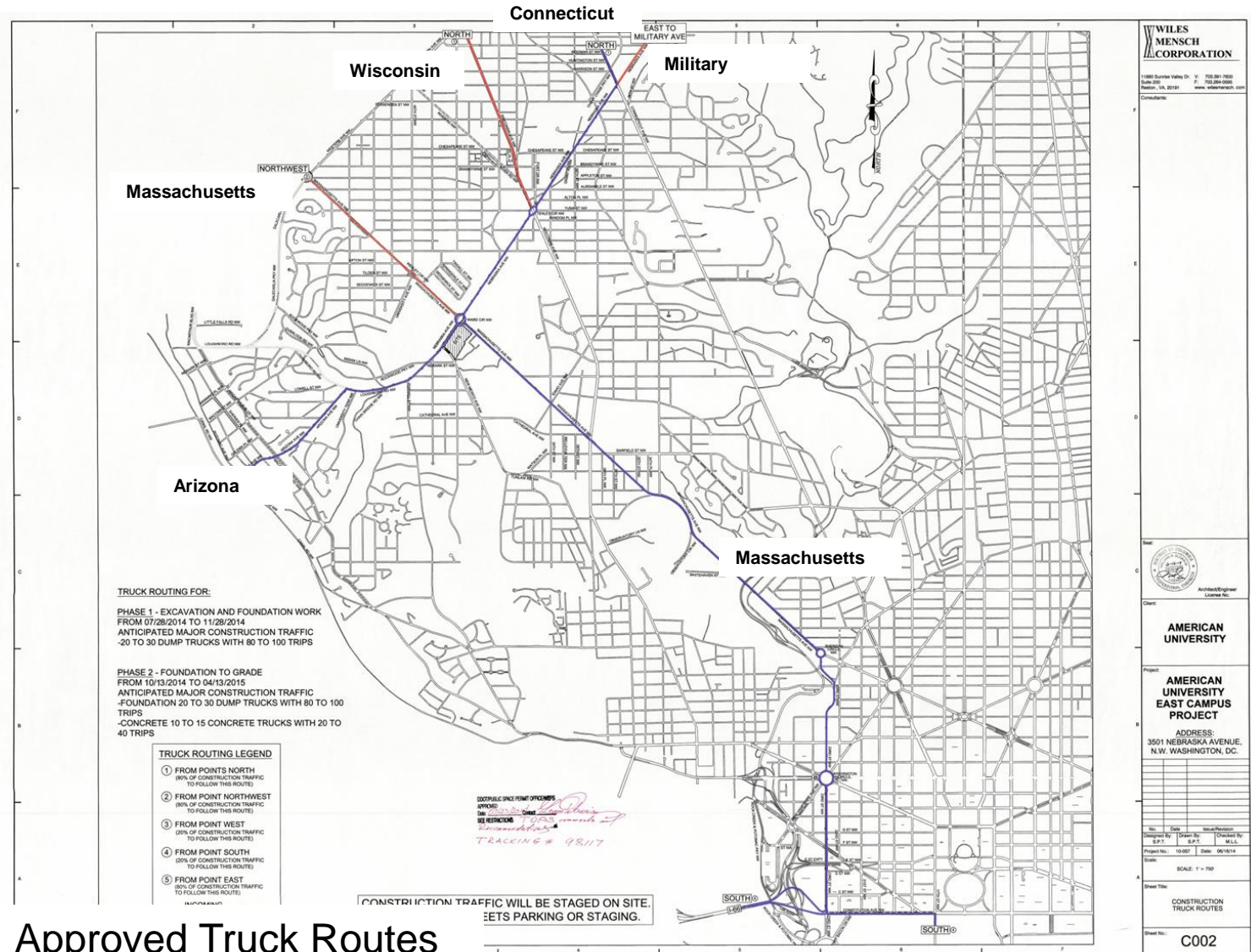


Six Month Look-Ahead Schedule





East Campus



Approved Truck Routes



Tunnel Improvements



Views of Main Street