

# HISTORIC PRESERVATION REVIEW BOARD PRESENTATION



October 27, 2011

**SMITHGROUP**



Legend

Existing Landuse

Land Use Designation

Low Density Residential

Low-Medium Density Residential

Medium Density Residential

High Density Residential

Commercial

Transport, Communication, Utilities

Industrial

Mixed Use

Institutional

Federal Public

Local Public

Public, Quasi-Public, Institutional

Parks and Open Spaces

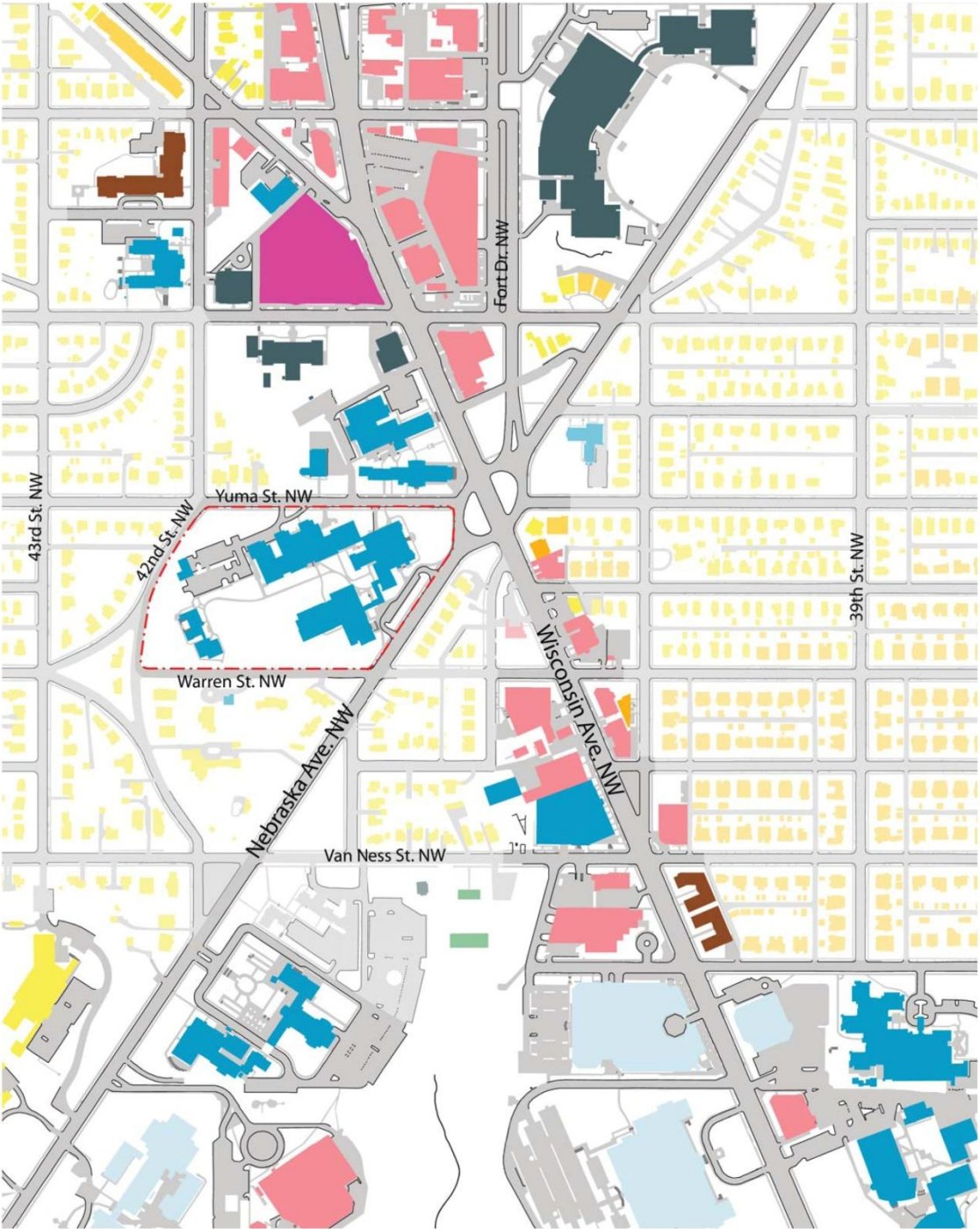
Parking

Roads, Alleys, Median

Transportation Right of Way

Undetermined

Water





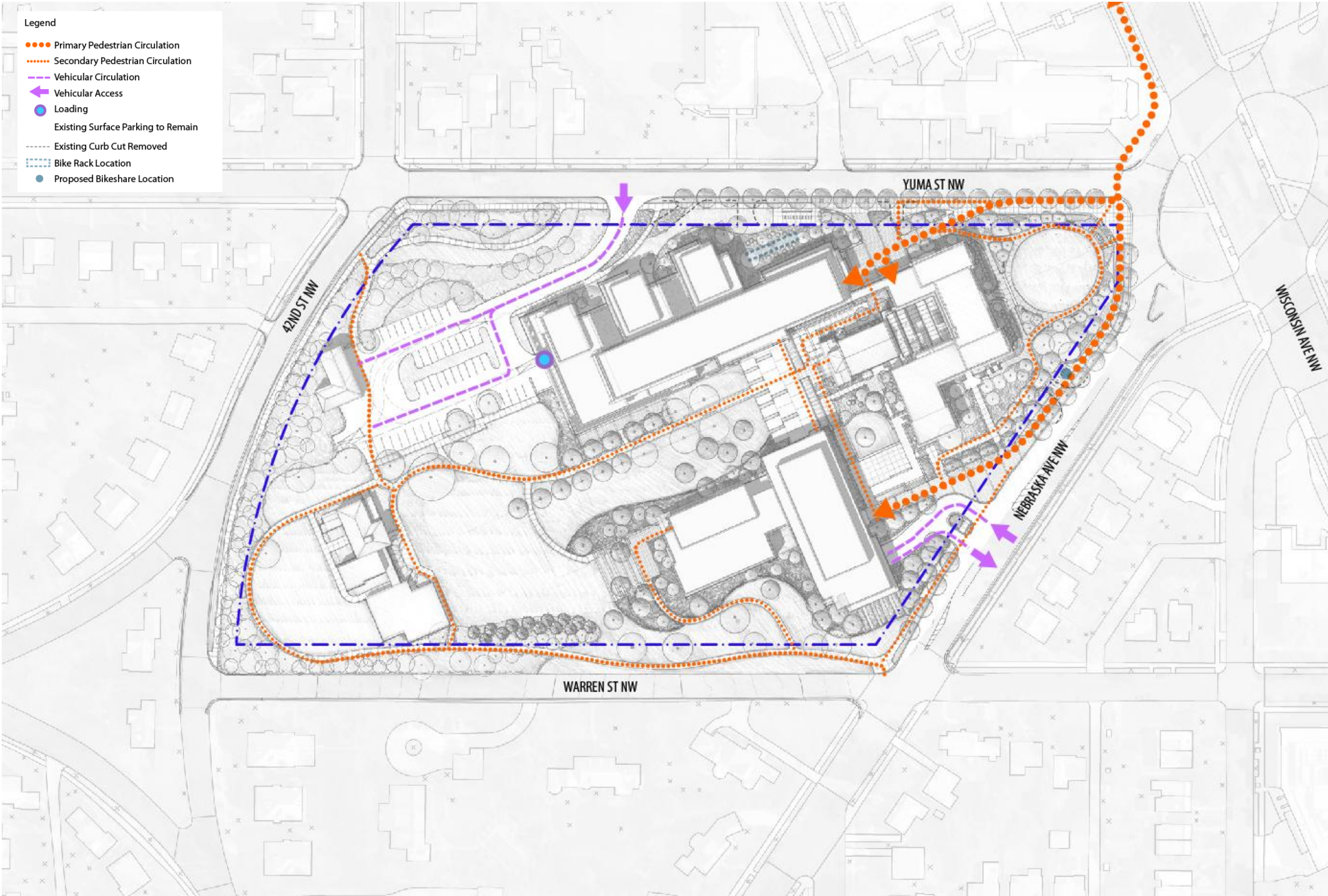




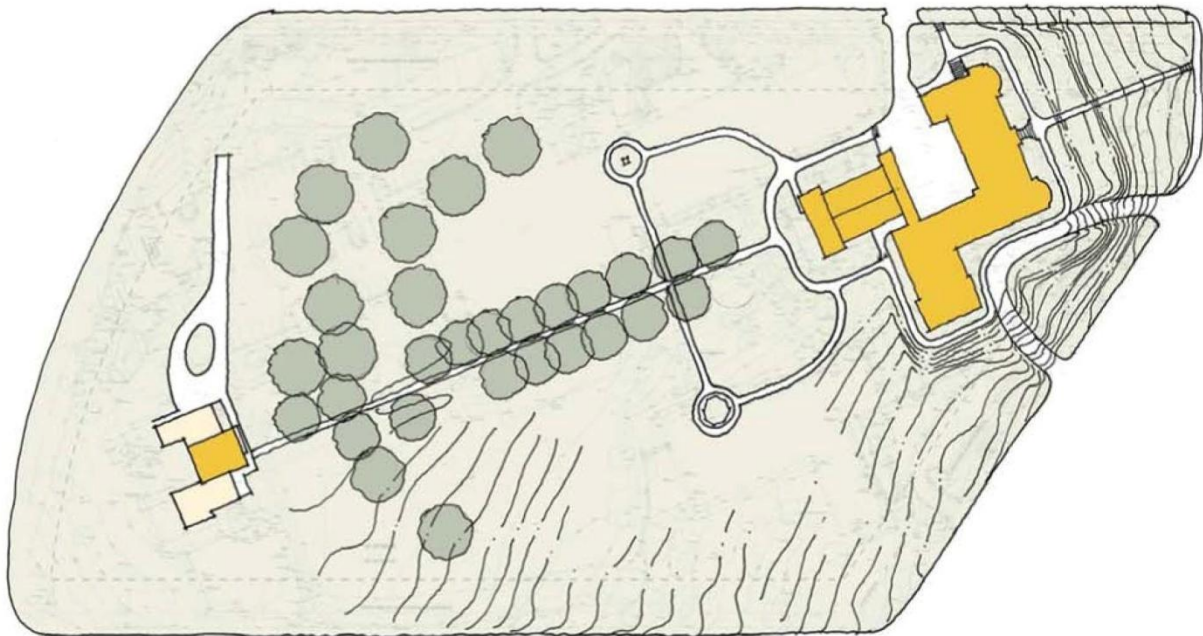




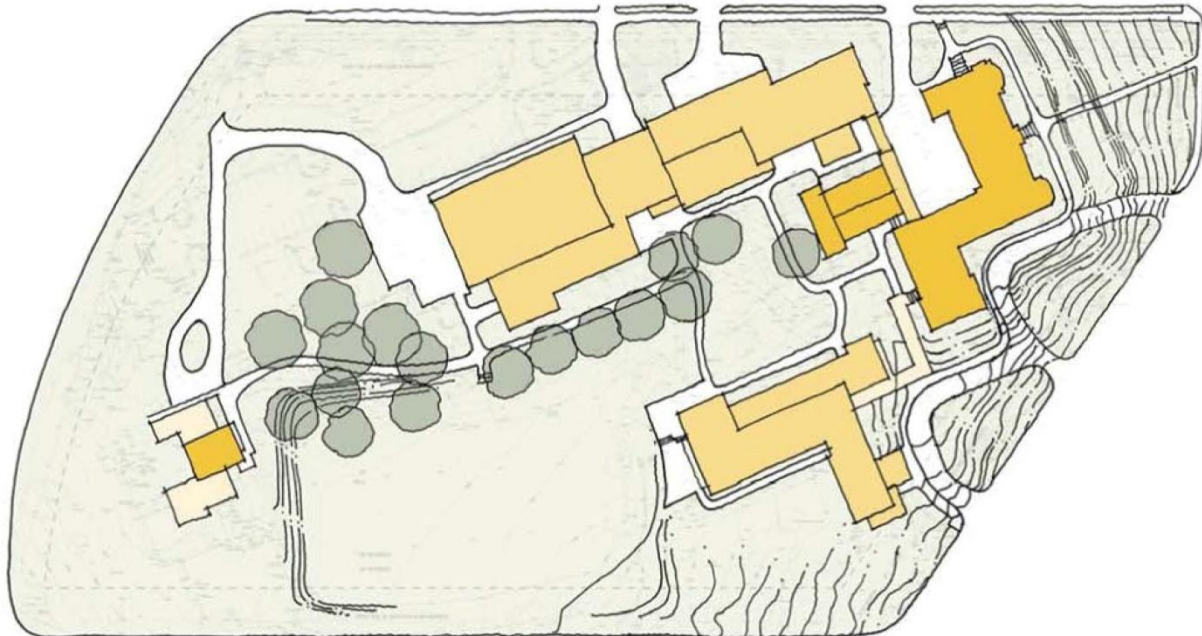
# Pedestrian and Vehicular Circulation Diagram



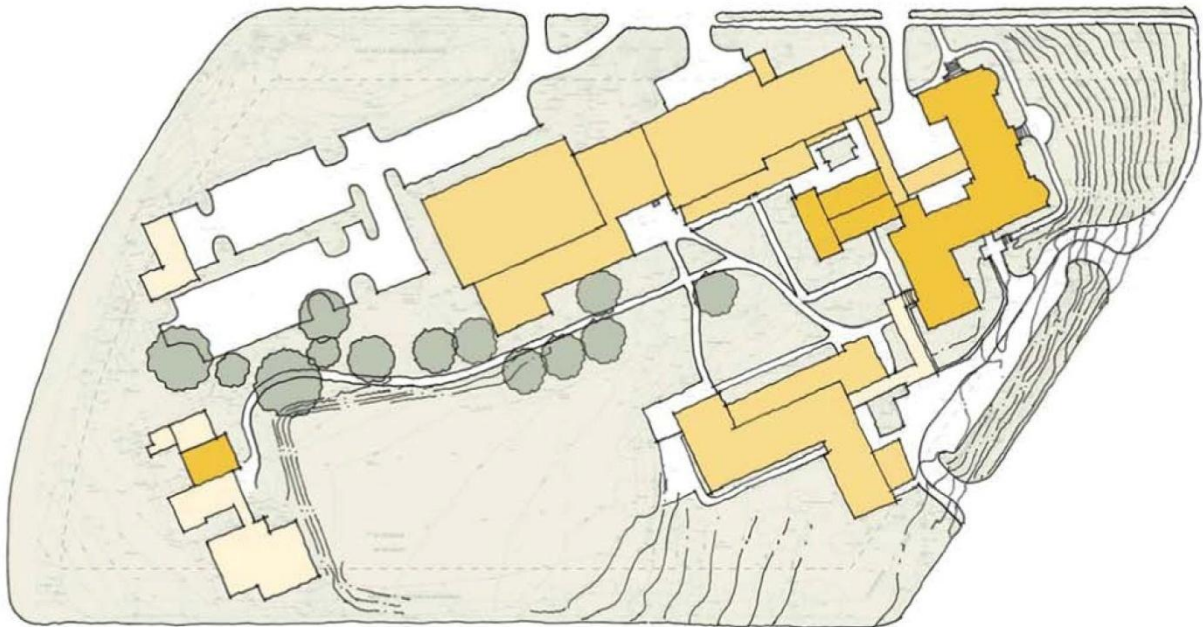




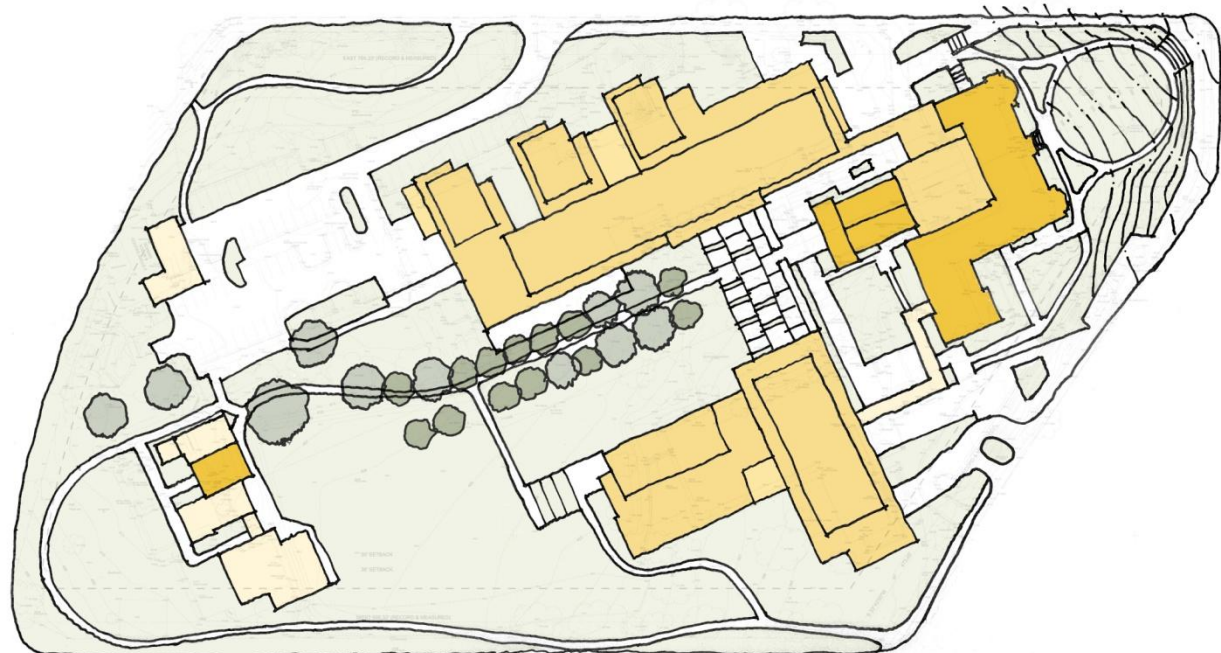
1904 - 1955    1839 Dunblane, 1904 Immaculata, 1920s Extension, Chapel



1955    Immaculata Expansion

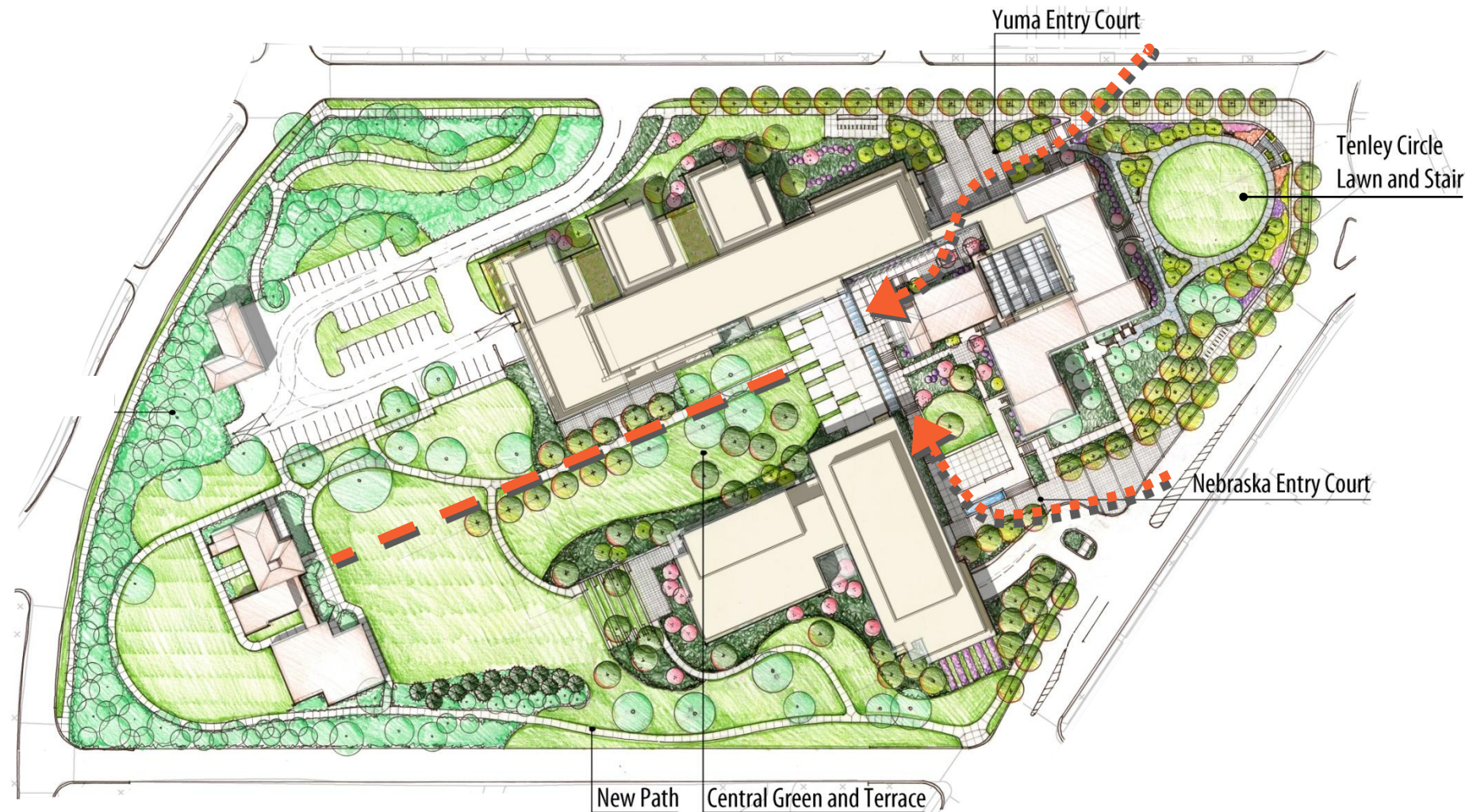


2011    Site modifications



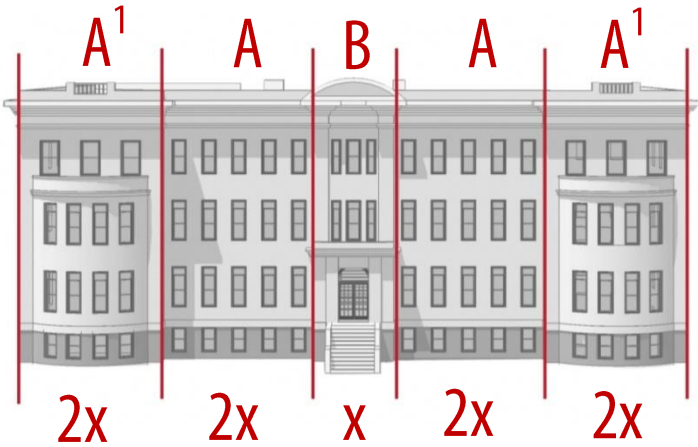
Proposed    Retain campus character





- Yuma, surrounding neighborhood
- Connect to metro
- Yuma entry
- Porosity: hyphens
- Public space
- Capital Hall and Chapel
- Compatible design
- Density toward Wisconsin
- Sustainable Design – LEED Gold
  - Tree Canopy
  - Permeable surfaces
- College campus
- Dunblane, site organization





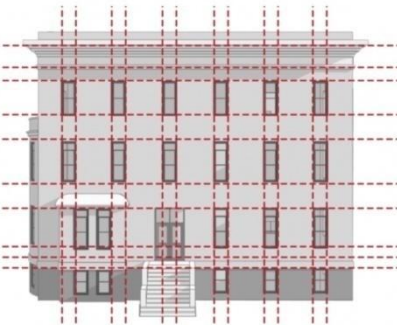
PROPORTION



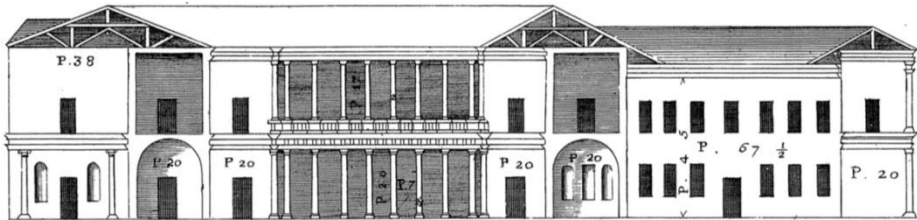
RHYTHM



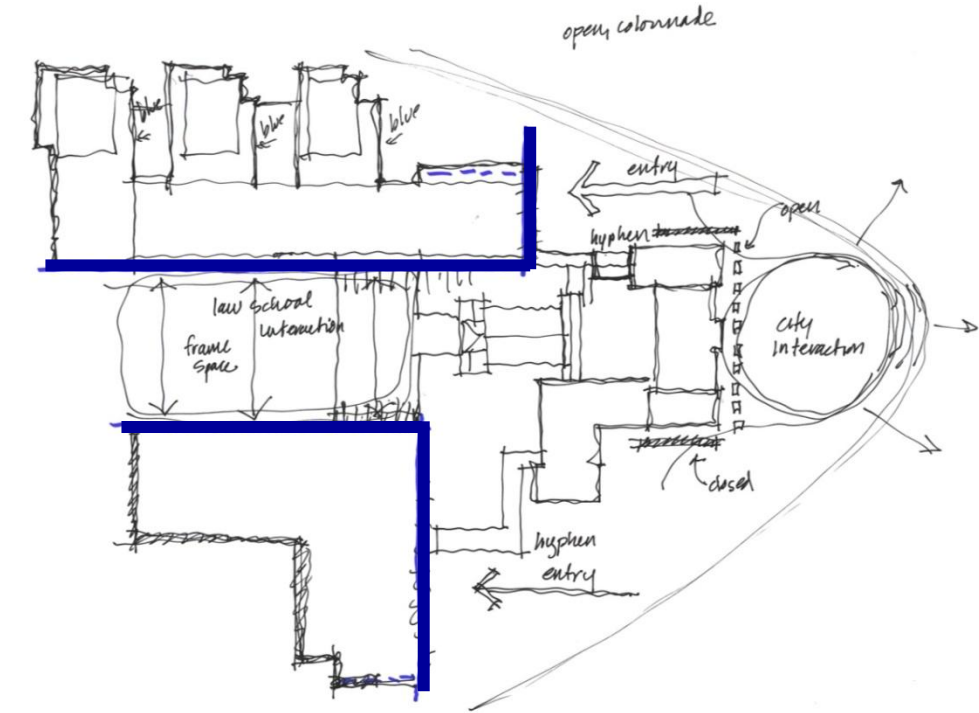
FENESTRATION



FENESTRATION



PALLADIO -- ENTRY, POROSITY



ORGANIZATION



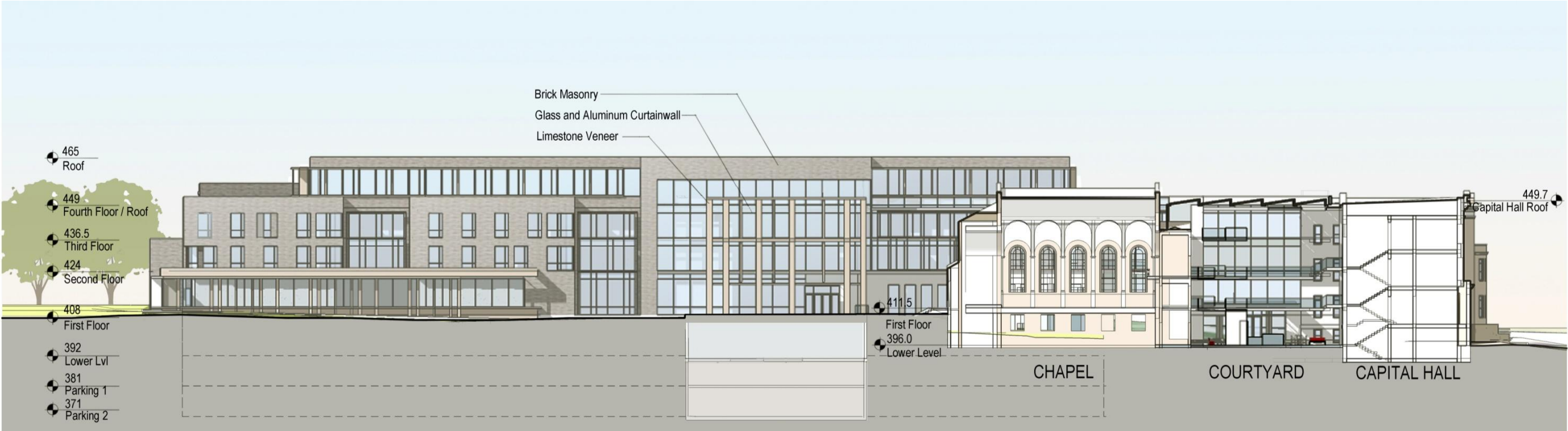


East Elevation



North Elevation





South Elevation - Courtyard



North Elevation - Courtyard





South Elevation – Nebraska Ave / Warren Street







































Existing



LIMESTONE

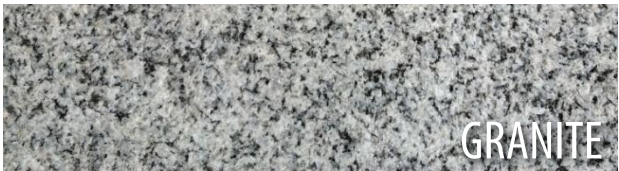


GRANITE

Sitework



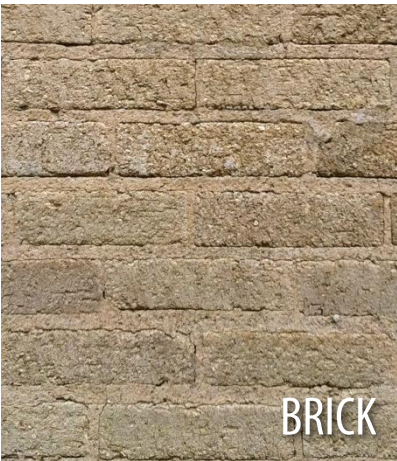
GRANITE



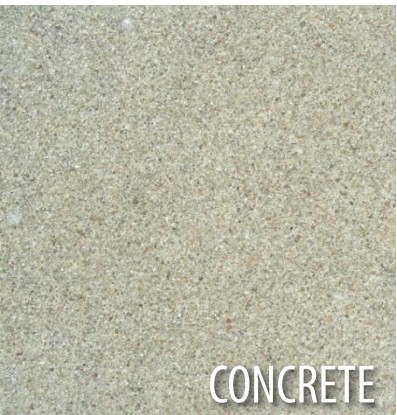
GRANITE



LIMESTONE



BRICK



CONCRETE

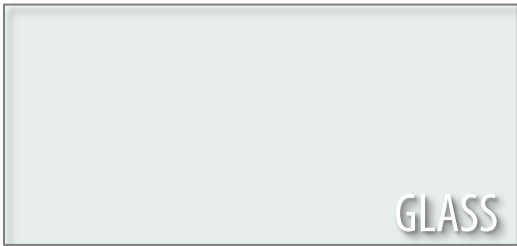
Proposed



LIMESTONE



BRICK BLEND



GLASS



METAL

Sitework



PERMEABLE PAVERS



CONCRETE







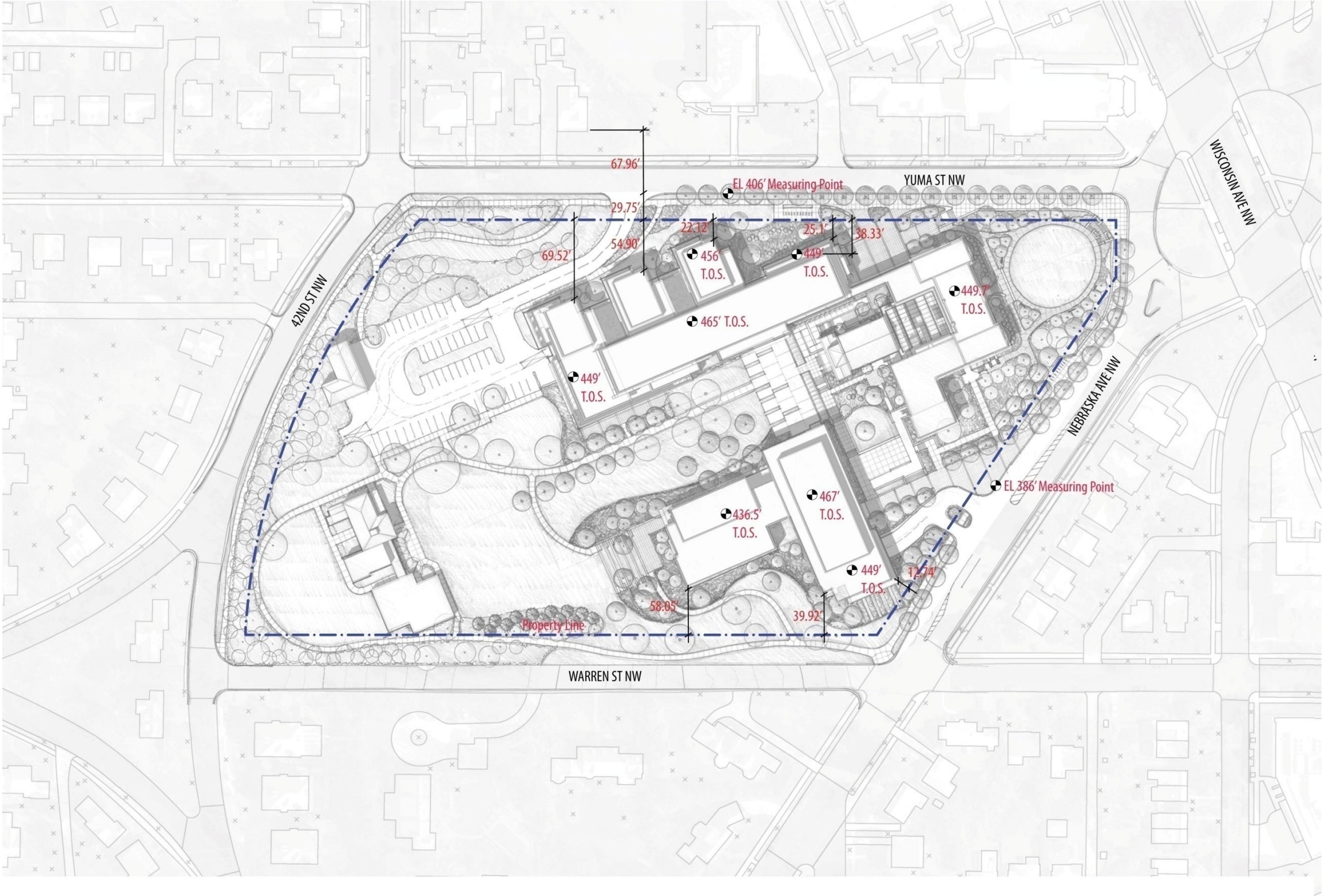




---

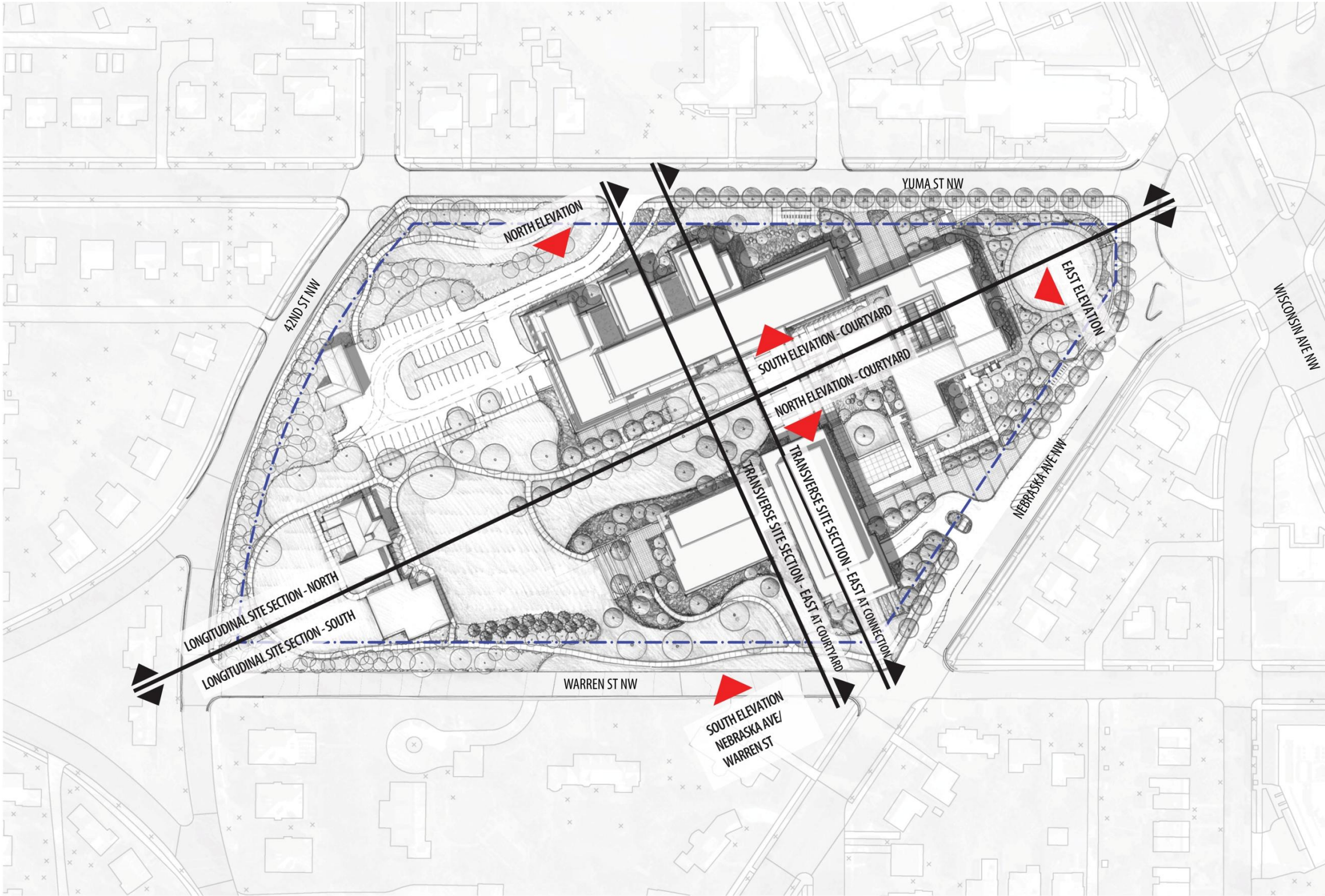


# Proposed Site Plan

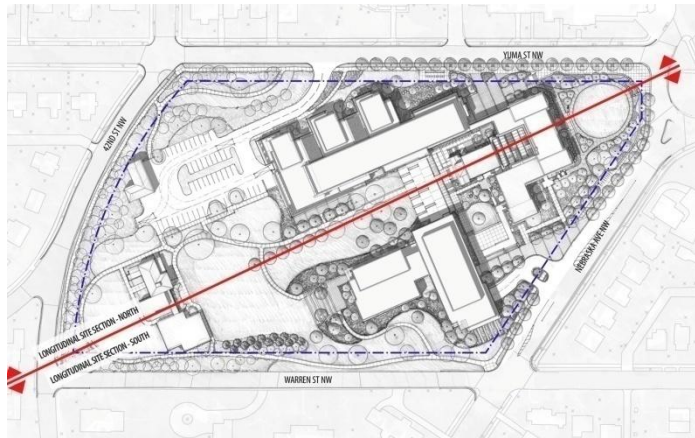




# Key Plan





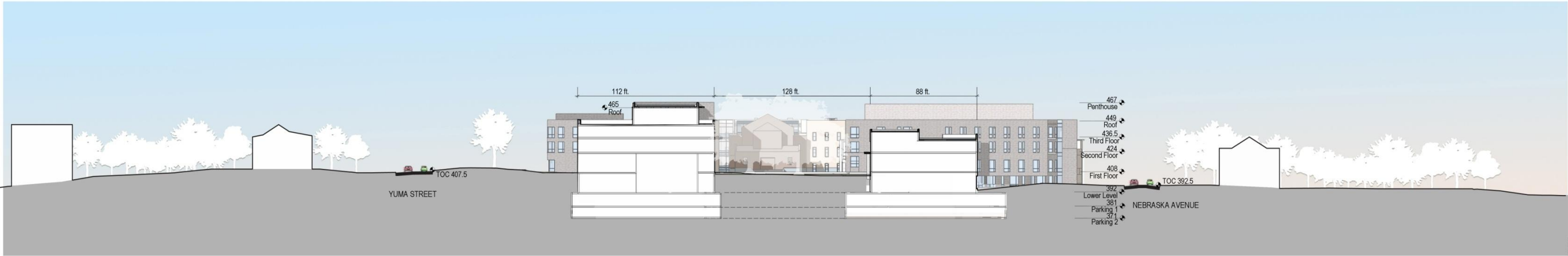
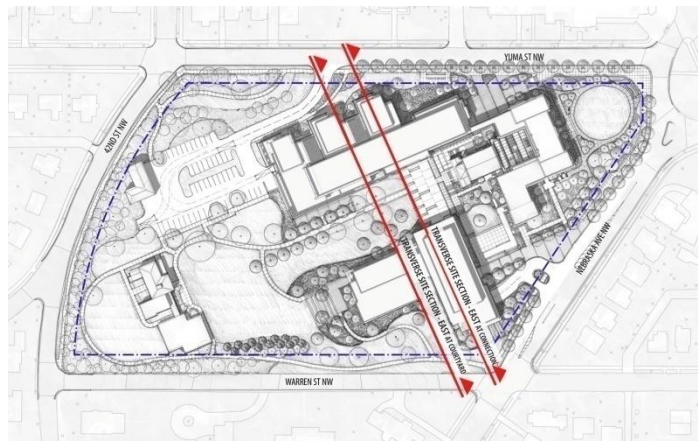


Longitudinal Site Section - North

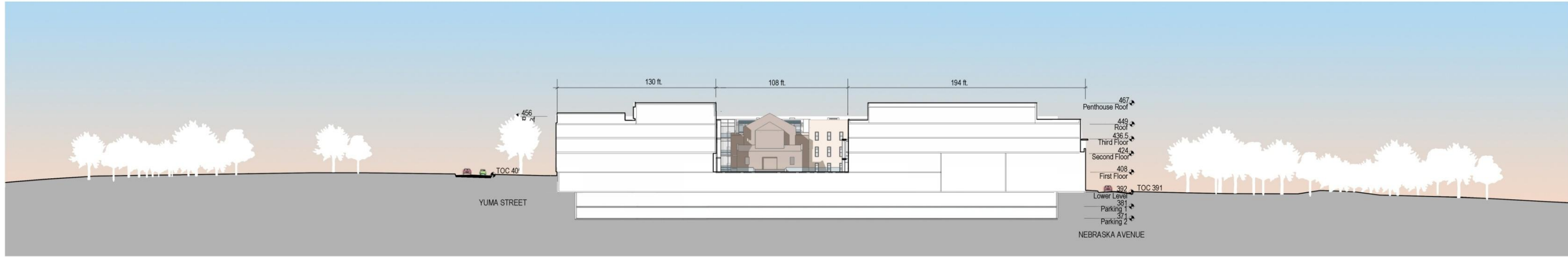


Longitudinal Site Section - South





Transverse Site Section – East at Courtyard



Transverse Site Section – East at Connection



# Yuma Entry





# Courtyard View – Dunblane Approach





# Courtyard View – Dunblane from Chapel





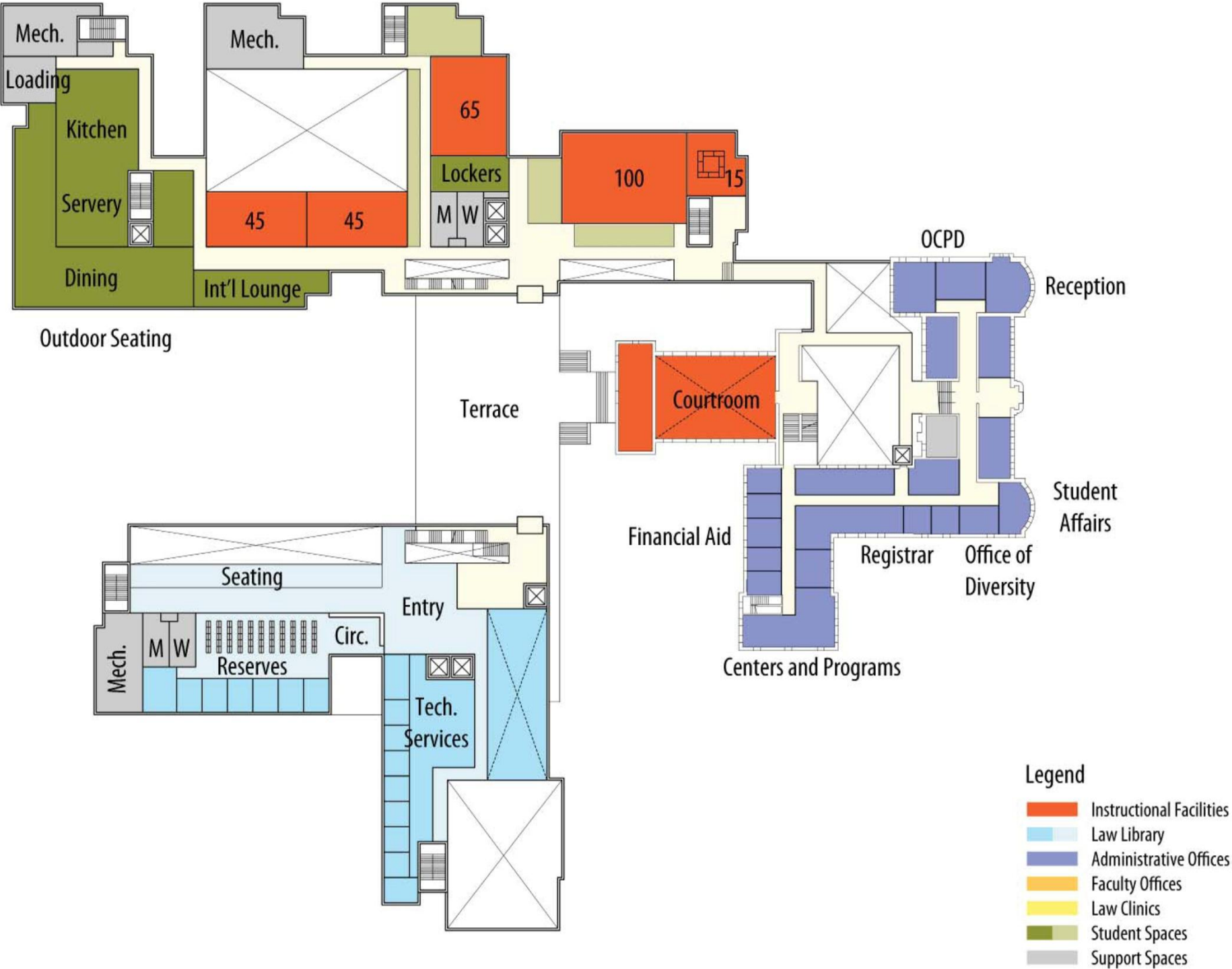
# Lower Level Floor Plan



- Legend
- Instructional Facilities
  - Law Library
  - Administrative Offices
  - Faculty Offices
  - Law Clinics
  - Student Spaces
  - Support Spaces

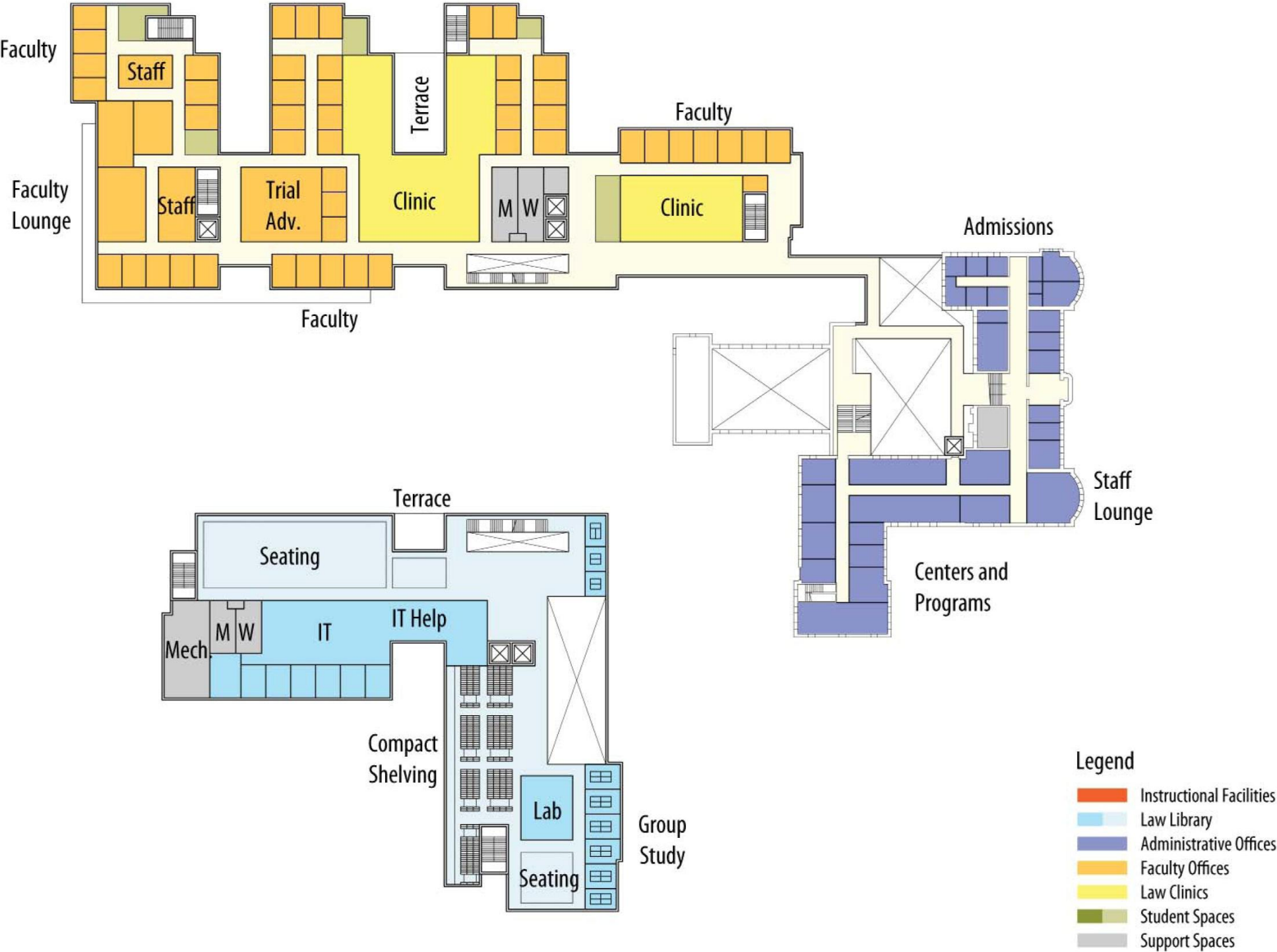


# First Floor Plan



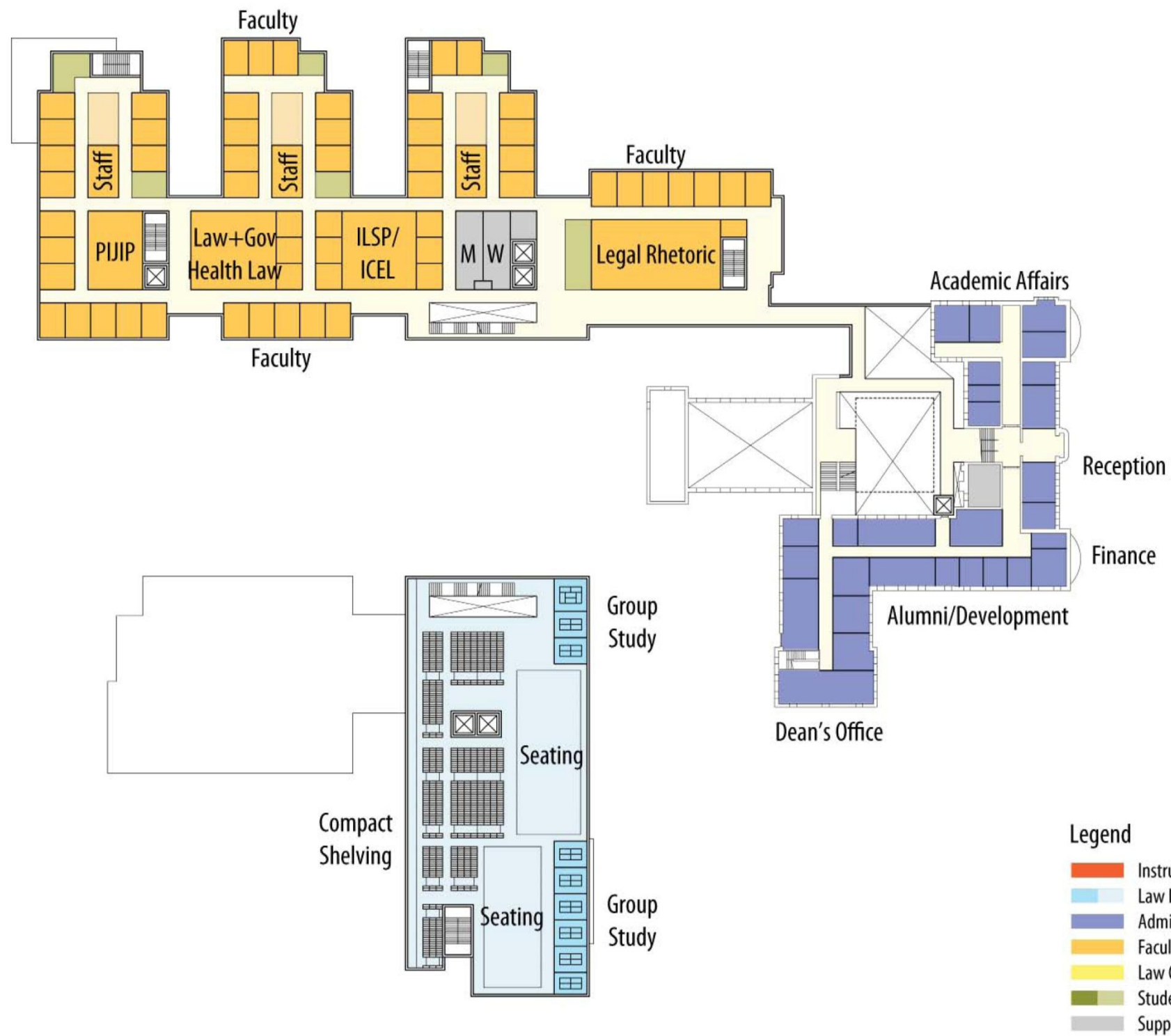


# Second Floor Plan



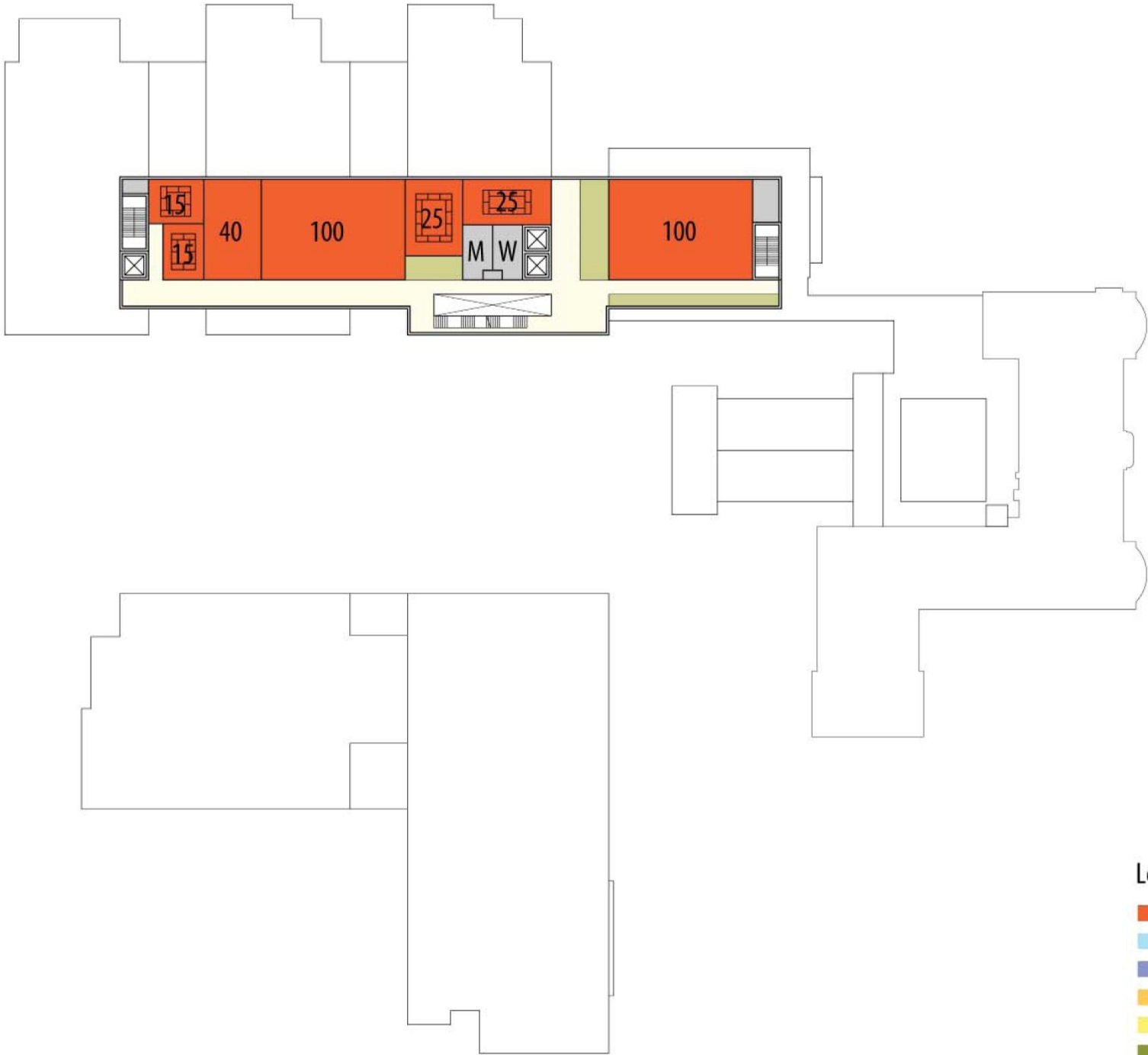


# Third Floor Plan





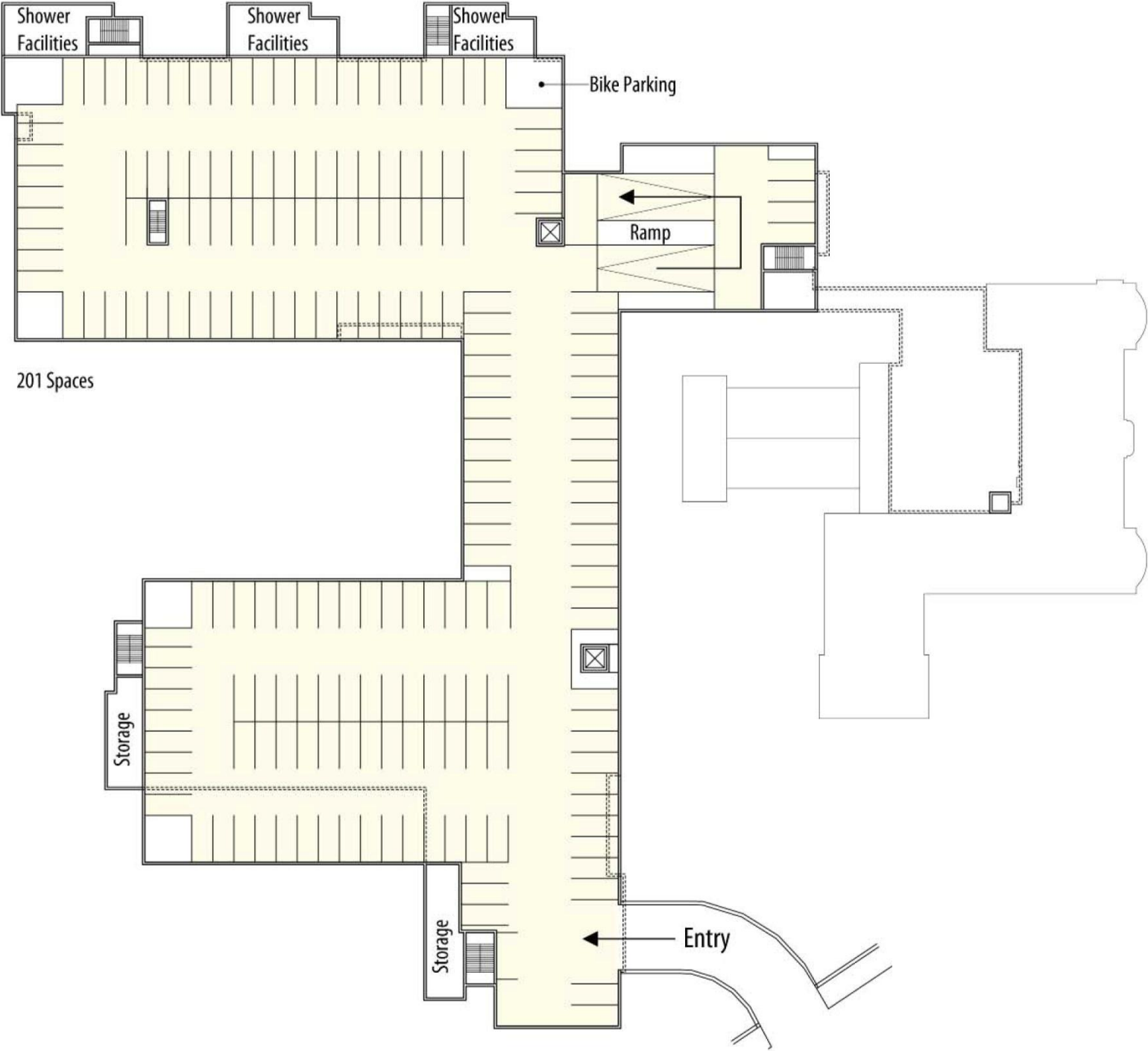
# Fourth Floor Plan



- Legend
- Instructional Facilities
  - Law Library
  - Administrative Offices
  - Faculty Offices
  - Law Clinics
  - Student Spaces
  - Support Spaces



# First Parking Level Floor Plan





# Second Parking Level Floor Plan

