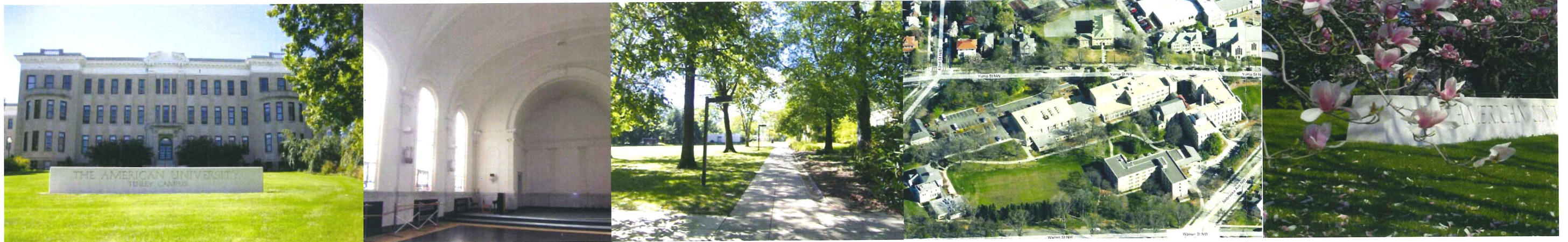


**TAB A**

# APPLICATION FOR FURTHER PROCESSING



NOVEMBER 7, 2011 UPDATE

SMITHGROUP

## **TABLE OF CONTENTS**

### **Application for Further Processing of a Campus Plan for the Relocation of the Washington College of Law to the Tenley Campus**

#### **Site Diagrams and Plans**

- 1.0 Existing Urban Context Diagram
- 2.0 Proposed Site Plan
- 3.0 Preliminary Landscape Plan
- 4.0 Tree Preservation Plan
- 5.0 Stakeholder Goals / Design Response
- 6.0 Pedestrian and Vehicular Circulation Diagram

#### **Building Elevations and Sections**

- 7.0 Key Plan
- 8.0 Longitudinal Site Sections
- 9.0 Transverse Site Sections
- 10.0 Building Elevations
- 11.0 Building Elevations
- 12.0 Building Elevations

#### **Renderings and Photo Montages**

- 13.0 Shadow Studies
- 14.0 Aerial View
- 15.0 View From Tenley Circle
- 16.0 Yuma Entry View
- 17.0 Yuma Façade View
- 18.0 Nebraska Entry Aerial View
- 19.0 Nebraska Entry View
- 20.0 Nebraska Entry View
- 21.0 Nebraska – Warren View
- 22.0 Courtyard Aerial View
- 23.0 Courtyard View – Dunblane Approach
- 24.0 Courtyard View – Dunblane from chapel
- 25.0 Materials

#### **Building Plans**

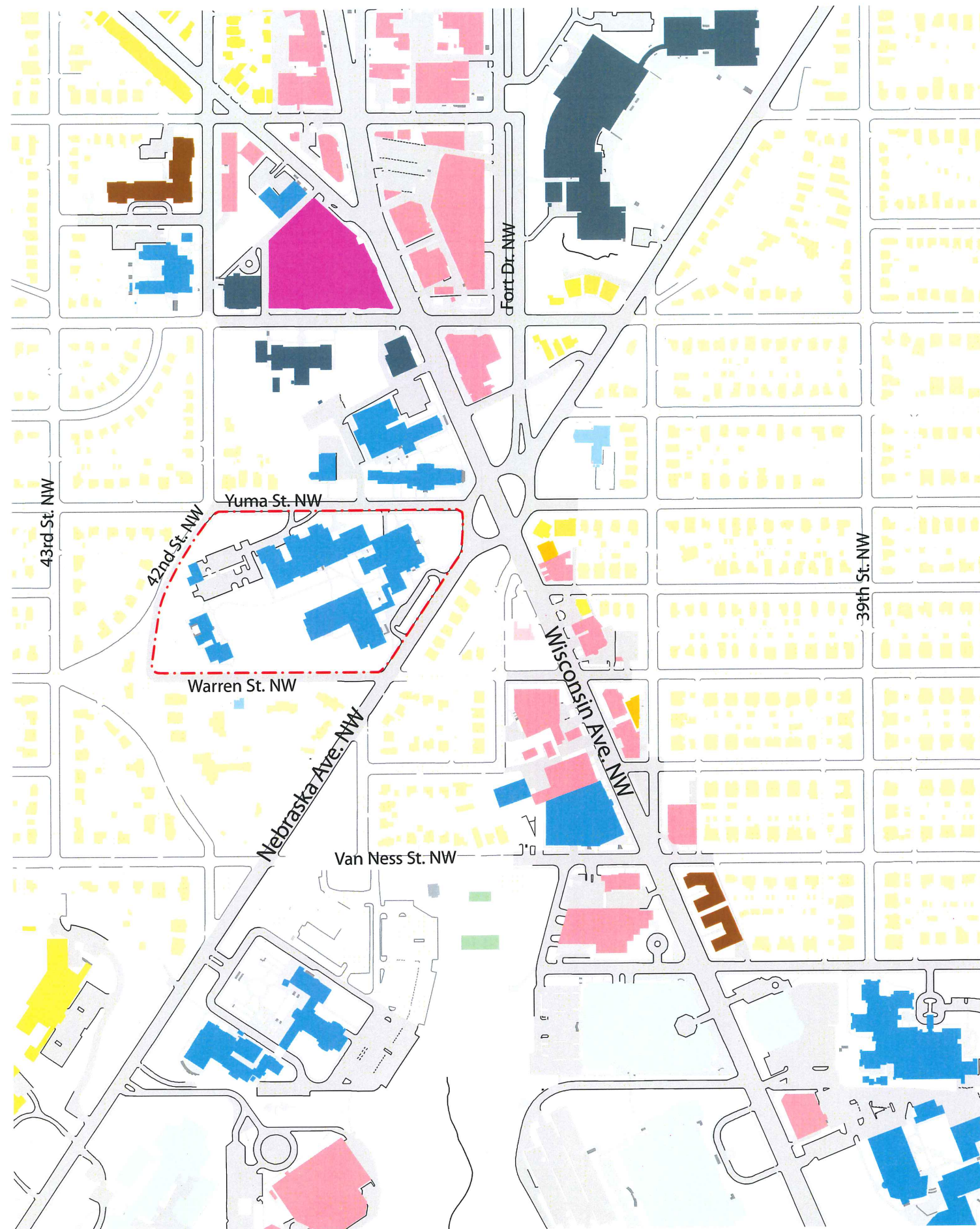
- 26.0 Lower Level Floor Plan
- 27.0 First Floor Plan
- 28.0 Second Floor Plan
- 29.0 Third Floor Plan
- 30.0 Fourth Floor Plan
- 31.0 First Parking Level Floor Plan
- 32.0 Second Parking Level Floor Plan

**Legend**

**Existing Landuse**

**Land Use Designation**

- Low Density Residential
- Low-Medium Density Residential
- Medium Density Residential
- High Density Residential
- Commercial
- Transport, Communication, Utilities
- Industrial
- Mixed Use
- Institutional
- Federal Public
- Local Public
- Public, Quasi-Public, Institutional
- Parks and Open Spaces
- Parking
- Roads; Alleys; Median
- Transportation Right of Way
- Undetermined
- Water



American University  
4400 Massachusetts Avenue, NW  
Washington, DC 20016-6200

**AMERICAN UNIVERSITY**  
Tenley Campus- Proposed  
Washington College of Law

**SMITHGROUP**  
architecture engineering interiors planning  
SMITHGROUP, INC.  
1850 K STREET NW  
SUITE 250  
WASHINGTON, DC 20006  
T 202.842.2100  
F 202.974.4500  
www.smithgroup.com



**EXISTING  
URBAN CONTEXT  
DIAGRAM**

DRAWING TITLE  
November 7, 2011

DATE  
1"=400'



SCALE

PROJECT NUMBER  
1.0

DRAWING NUMBER



American University  
4400 Massachusetts Avenue, NW  
Washington, DC 20016-6200

AMERICAN UNIVERSITY  
Tenley Campus- Proposed  
Washington College of Law

**SMITHGROUP**  
architecture engineering interiors planning  
SMITHGROUP, INC.  
1850 K STREET NW  
SUITE 250  
WASHINGTON, DC 20006  
T 202 842 2100  
F 202 974 4500  
www.smithgroup.com



PROJECT NORTH

**PROPOSED  
SITE PLAN**

DRAWING TITLE  
November 7, 2011

DATE  
1"=100'

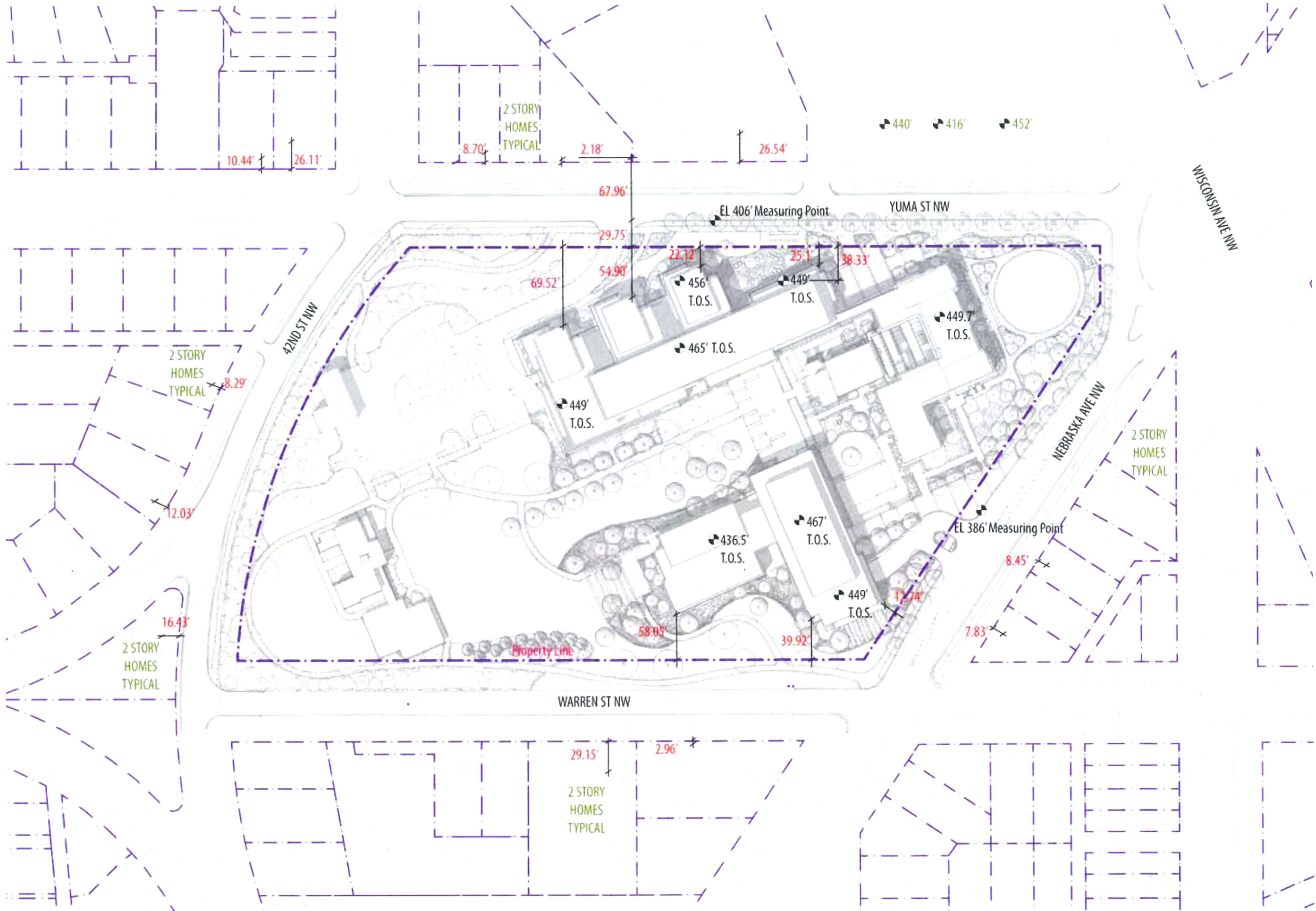


SCALE

PROJECT NUMBER

2.0

DRAWING NUMBER




Legend

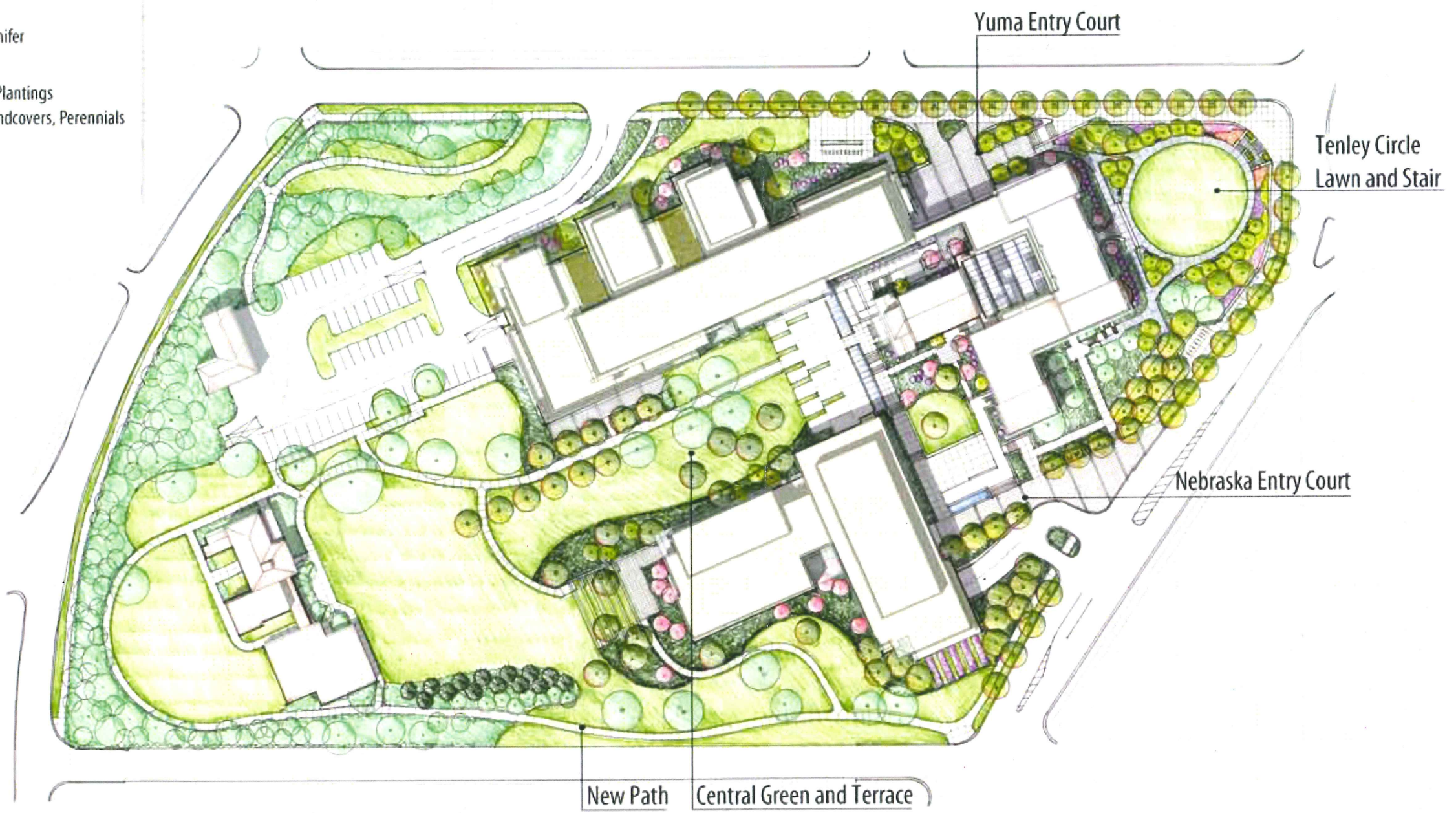
 Existing Trees, Plantings to Remain

 New Trees Deciduous

 New Trees Conifer

 Ornamental Plantings  
Shrubs, Groundcovers, Perennials

 New Paving



American University  
4400 Massachusetts Avenue, NW  
Washington, DC 20016-6200

**AMERICAN UNIVERSITY**  
Tenley Campus- Proposed  
Washington College of Law

**SMITHGROUP**  
architecture engineering interiors planning  
SMITHGROUP, INC.  
1850 K STREET NW  
SUITE 250  
WASHINGTON, DC 20006  
T 202 842 2100  
F 202 974 4500  
www.smithgroup.com



**PRELIMINARY  
LANDSCAPE PLAN**

DRAWING TITLE  
November 7, 2011  
DATE

1"=100'  
SCALE

PROJECT NUMBER  
3.0  
DRAWING NUMBER



American University  
4400 Massachusetts Avenue, NW  
Washington, DC 20016-6200

AMERICAN UNIVERSITY  
Tenley Campus- Proposed  
Washington College of Law

**SMITHGROUP**  
architecture engineering interiors planning  
SMITHGROUP, INC.  
1850 K STREET NW  
SUITE 250  
WASHINGTON, DC 20006  
T 202 842 2100  
F 202 974 4500  
www.smithgroup.com



PROJECT NORTH

**TREE PRESERVATION  
PLAN**

DRAWING TITLE  
November 7, 2011

DATE  
1"=100'






SCALE

PROJECT NUMBER  
4.0

DRAWING NUMBER



Legend:

-  Trees to be removed
-  Proposed trees
-  Existing trees to remain



American University  
4400 Massachusetts Avenue, NW  
Washington, DC 20016-6200

**AMERICAN UNIVERSITY**  
Tenley Campus- Proposed  
Washington College of Law

**SMITHGROUP**  
architecture engineering interiors planning  
SMITHGROUP, INC.  
1850 K STREET NW  
SUITE 250  
WASHINGTON, DC 20006  
T 202 842 2100  
F 202 974 4500  
www.smithgroup.com



PROJECT NORTH

**PEDESTRIAN AND  
VEHICULAR  
CIRCULATION DIAGRAM**

DRAWING TITLE

November 7, 2011

DATE

1"=100'



SCALE

PROJECT NUMBER

5.0

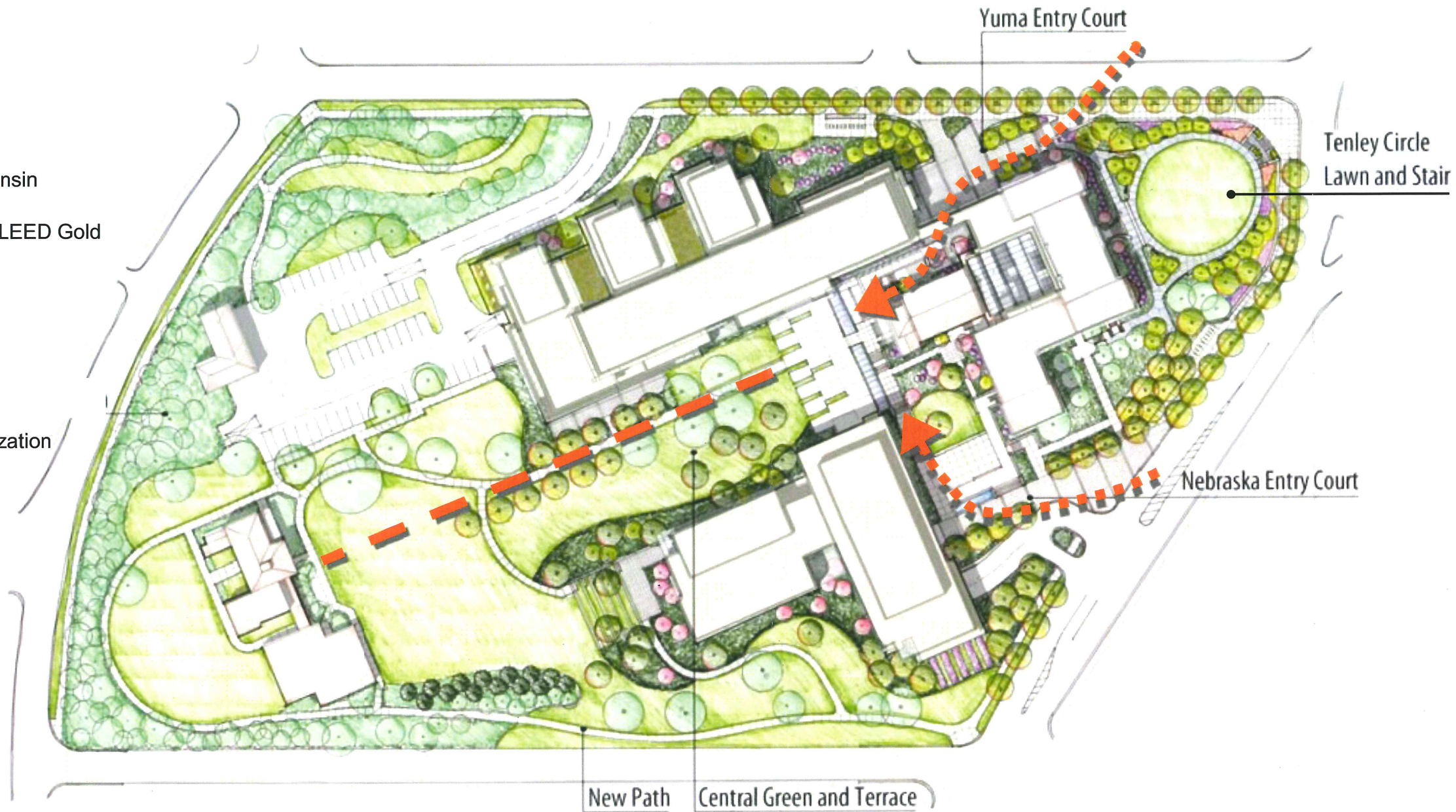
DRAWING NUMBER

- Primary Pedestrian Circulation
- Secondary Pedestrian Circulation
- - - - Vehicular Circulation
- ← Vehicular Access
- Loading
- Existing Surface Parking to Remain
- - - - Existing Curb Cut Removed
- Bike Rack Location
- Proposed Bikeshare Location





- Yuma, Surrounding neighborhood
- Connect to metro
- Yuma Entry
- Porosity: hyphens
- Public space
- Capital Hall Chapel
- Compatible design
- Density toward Wisconsin
- Sustainable Design - LEED Gold
- Tree Canopy
- Permeable surfaces
- College Campus
- Dunblane, site organization



American University  
4400 Massachusetts Avenue, NW  
Washington, DC 20016-6200

**AMERICAN UNIVERSITY**  
Tenley Campus- Proposed  
Washington College of Law

**SMITHGROUP**  
architecture engineering interiors planning  
SMITHGROUP, INC.  
1850 K STREET NW  
SUITE 250  
WASHINGTON, DC 20006  
T 202 842 2100  
F 202 974 4500  
www.smithgroup.com

**STAKEHOLDER GOALS  
DESIGN RESPONSE**

DRAWING TITLE  
November 7, 2011

DATE  
1"=100'

PROJECT NUMBER  
6.0  
DRAWING NUMBER



American University  
 4400 Massachusetts Avenue, NW  
 Washington, DC 20016-6200

AMERICAN UNIVERSITY  
 Tenley Campus- Proposed  
 Washington College of Law

**SMITHGROUP**  
 architecture engineering interiors planning  
 SMITHGROUP, INC.  
 1850 K STREET NW  
 SUITE 250  
 WASHINGTON, DC 20006  
 T 202.842.2100  
 F 202.974.4500  
 www.smithgroup.com



PROJECT NORTH

**KEY PLAN**

DRAWING TITLE

November 7, 2011

DATE

1"=100'

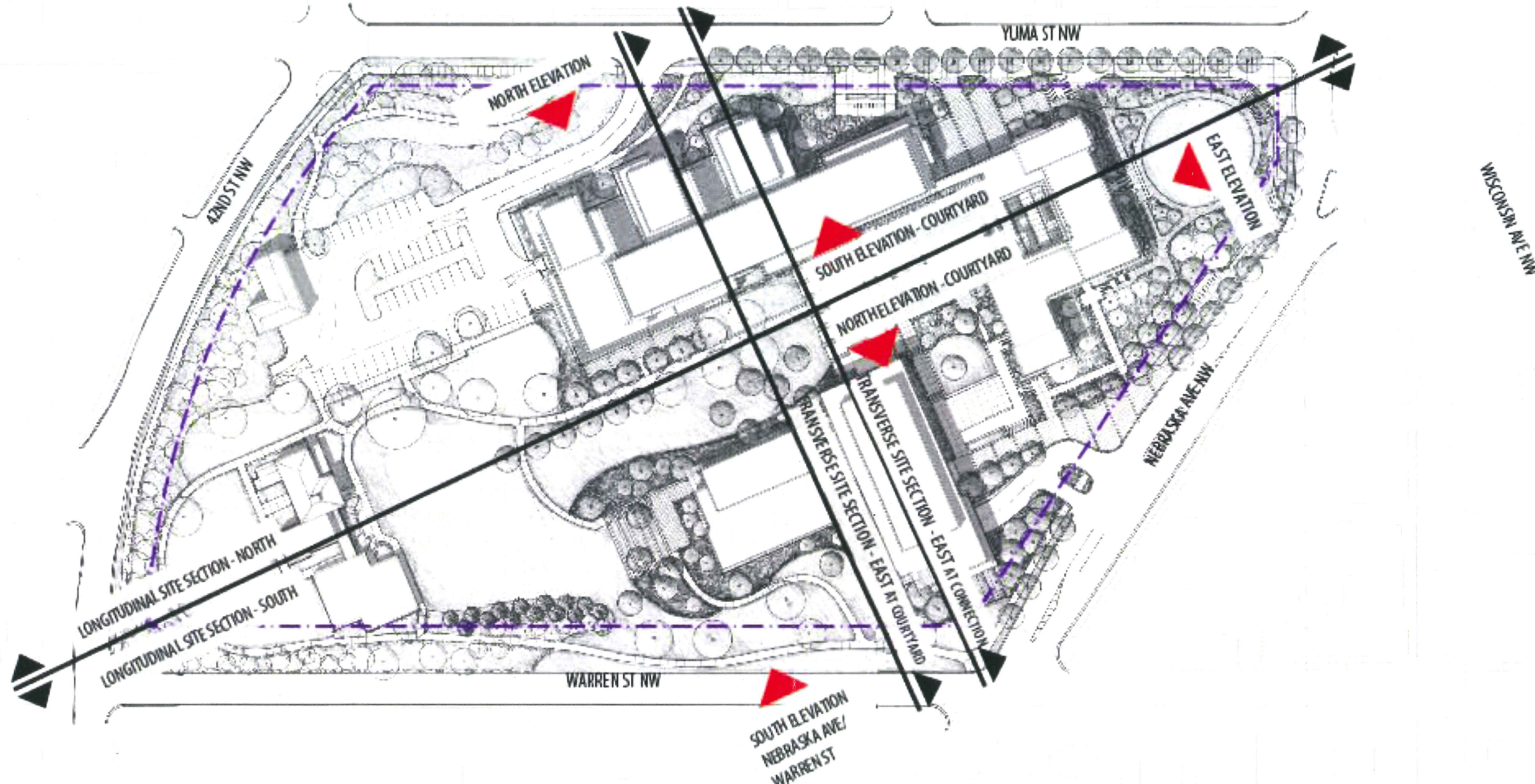


SCALE

PROJECT NUMBER

7.0

DRAWING NUMBER

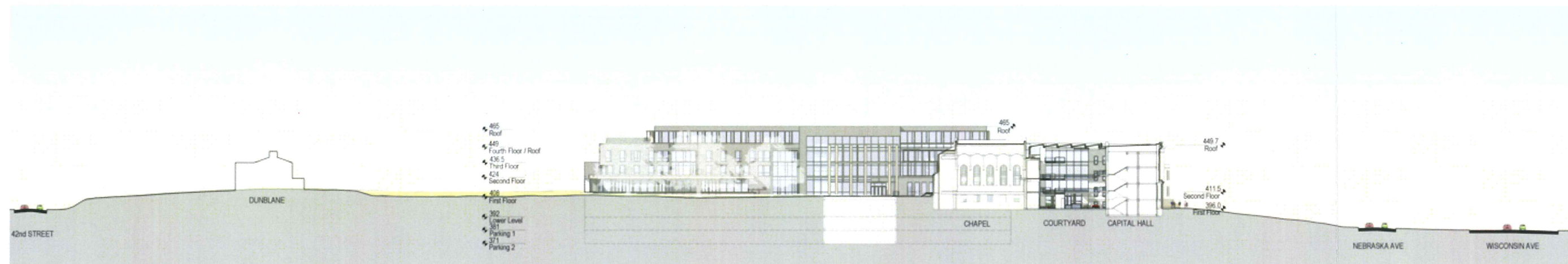




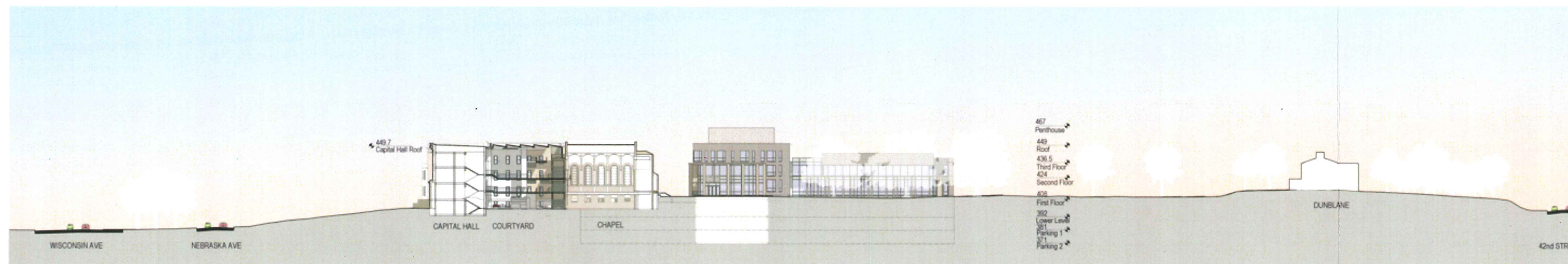
American University  
4400 Massachusetts Avenue, NW  
Washington, DC 20016-6200

**AMERICAN UNIVERSITY**  
Tenley Campus- Proposed  
Washington College of Law

**SMITHGROUP**  
architecture engineering interiors planning  
SMITHGROUP, INC.  
1850 K STREET NW  
SUITE 250  
WASHINGTON, DC 20006  
T 202 842 2100  
F 202 974 4500  
www.smithgroup.com



LONGITUDINAL SITE SECTION - NORTH



LONGITUDINAL SITE SECTION - SOUTH



**LONGITUDINAL  
SITE SECTIONS**

DRAWING TITLE

November 7, 2011

DATE

1"=90'



SCALE

PROJECT NUMBER

8.0

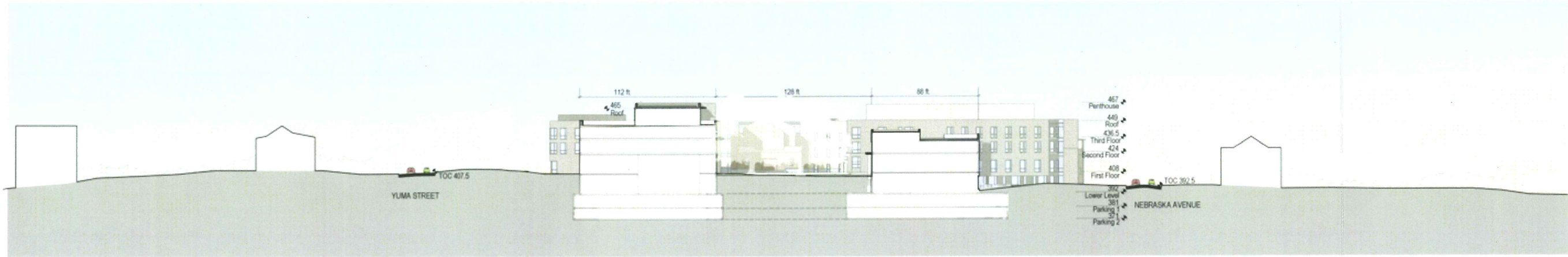
DRAWING NUMBER



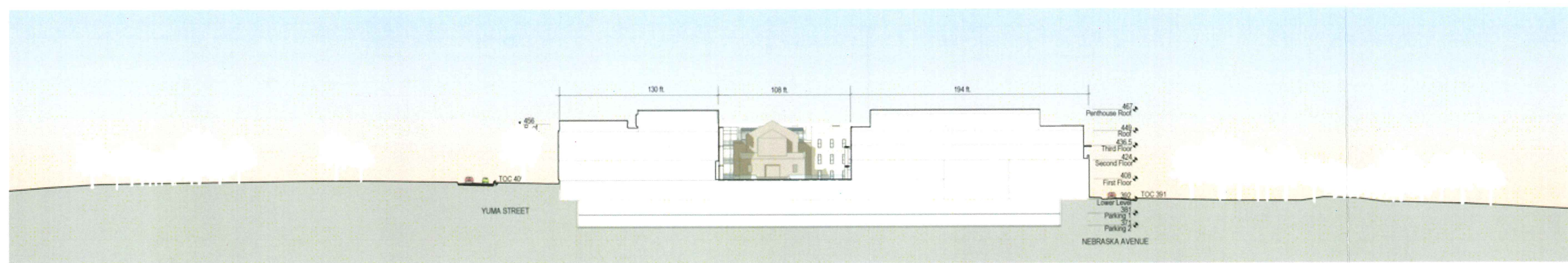
American University  
 4400 Massachusetts Avenue, NW  
 Washington, DC 20016-6200

**AMERICAN UNIVERSITY**  
 Tenley Campus- Proposed  
 Washington College of Law

**SMITHGROUP**  
 architecture engineering interiors planning  
 SMITHGROUP, INC.  
 1850 K STREET NW  
 SUITE 250  
 WASHINGTON, DC 20006  
 T 202.842.2100  
 F 202.974.4500  
 www.smithgroup.com



TRANSVERSE SITE SECTION - EAST AT COURTYARD



TRANSVERSE SITE SECTION - EAST AT CONNECTION



**TRANSVERSE  
 SITE SECTIONS**

DRAWING TITLE  
 November 7, 2011  
 DATE  
 1"=90'  
 SCALE  
 PROJECT NUMBER  
 9.0  
 DRAWING NUMBER



American University  
4400 Massachusetts Avenue, NW  
Washington, DC 20016-6200

AMERICAN UNIVERSITY  
Tenley Campus- Proposed  
Washington College of Law

**SMITHGROUP**  
architecture engineering interiors planning  
SMITHGROUP, INC.  
1850 K STREET NW  
SUITE 250  
WASHINGTON, DC 20006  
T 202 842 2100  
F 202 974 4500  
www.smithgroup.com



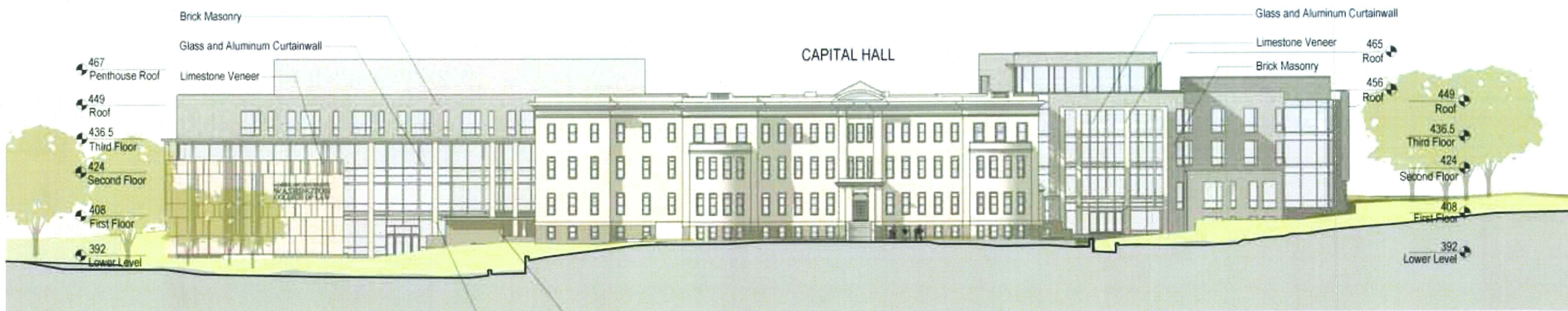
**BUILDING ELEVATIONS**

DRAWING TITLE  
November 7, 2011

DATE  
1"=40'



SCALE  
PROJECT NUMBER  
10.0  
DRAWING NUMBER



EAST ELEVATION

Limestone Veneer  
Fieldstone Base



NORTH ELEVATION



American University  
4400 Massachusetts Avenue, NW  
Washington, DC 20016-6200

**AMERICAN UNIVERSITY**  
Tenley Campus- Proposed  
Washington College of Law

**SMITHGROUP**

architecture engineering interiors planning

SMITHGROUP, INC.  
1850 K STREET NW  
SUITE 250  
WASHINGTON, DC 20006  
T 202 842 2100  
F 202 974 4500  
www.smithgroup.com



PROJECT NORTH

**BUILDING ELEVATIONS**

DRAWING TITLE

November 7, 2011

DATE

1"=40'

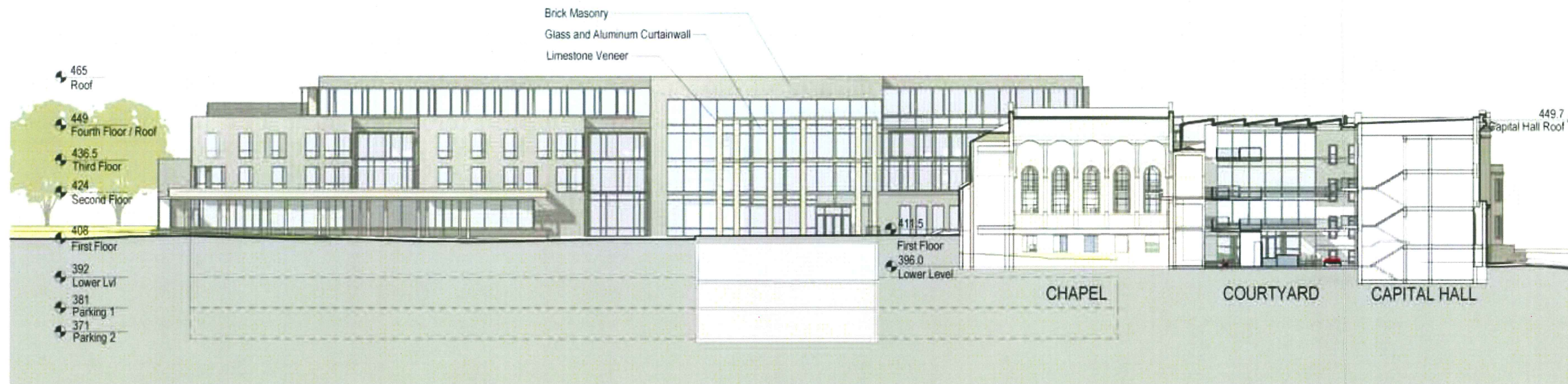


SCALE

PROJECT NUMBER

11.0

DRAWING NUMBER



SOUTH ELEVATION - COURTYARD



NORTH ELEVATION - COURTYARD