



American University
4400 Massachusetts Avenue, NW
Washington, DC 20016-6200

AMERICAN UNIVERSITY
Tenley Campus- Proposed
Washington College of Law

SMITHGROUP

architecture engineering interiors planning

SMITHGROUP, INC.
1850 K STREET NW
SUITE 250
WASHINGTON, DC 20006
T 202.842.2100
F 202.974.4500
www.smithgroup.com



SOUTH ELEVATION - NEBRASKA AVE/WARREN STREET



PROJECT NORTH

BUILDING ELEVATIONS

DRAWING TITLE

November 7, 2011

DATE

1"=40'

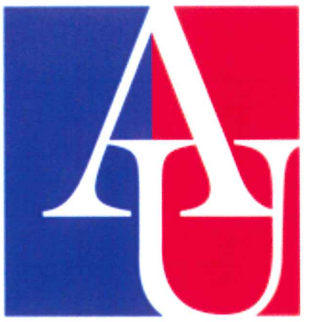


SCALE

PROJECT NUMBER

12.0

DRAWING NUMBER



American University
4400 Massachusetts Avenue, NW
Washington, DC 20016-6200

AMERICAN UNIVERSITY
Tenley Campus- Proposed
Washington College of Law

SMITHGROUP
architecture engineering interiors planning
SMITHGROUP, INC
1850 K STREET NW
SUITE 250
WASHINGTON, DC 20006
T 202.842.2100
F 202.974.4500
www.smithgroup.com

SHADOW STUDIES

DRAWING TITLE

November 7, 2011

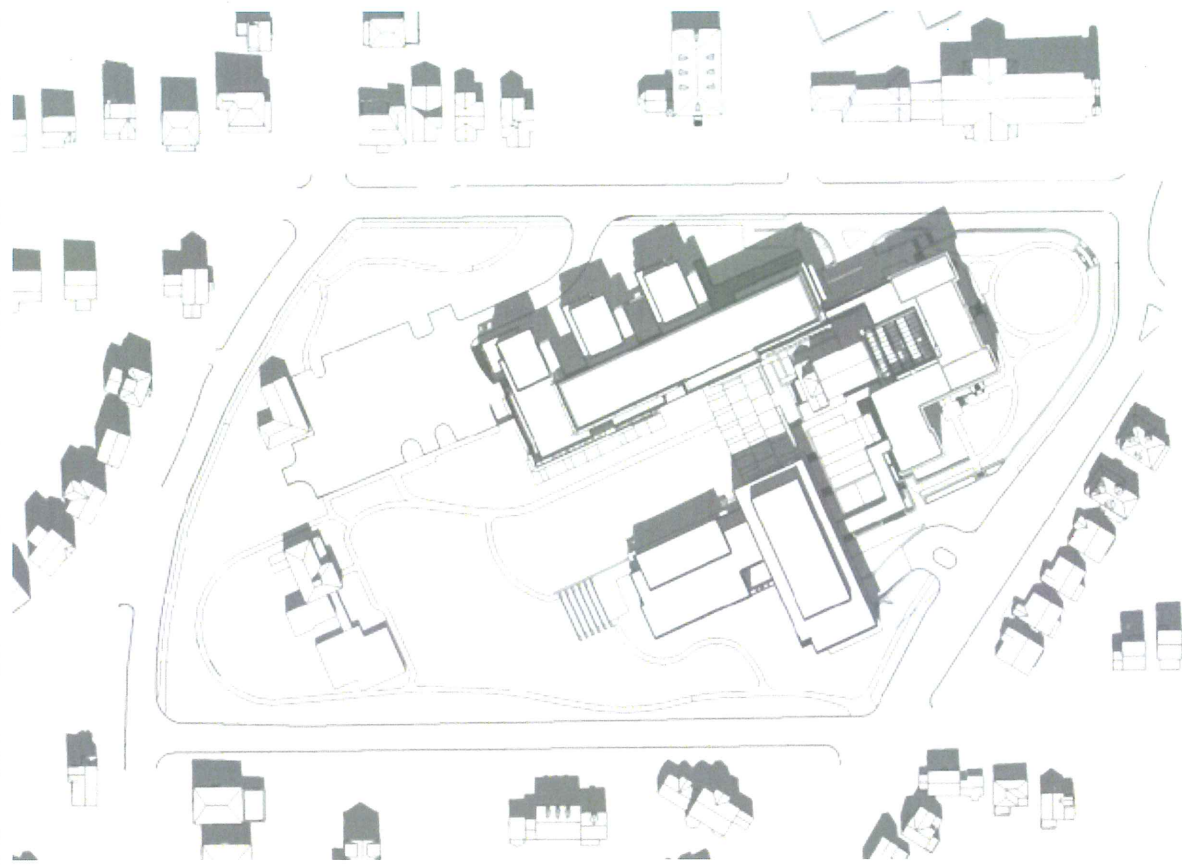
DATE

N.T.S.

PROJECT NUMBER

13.0

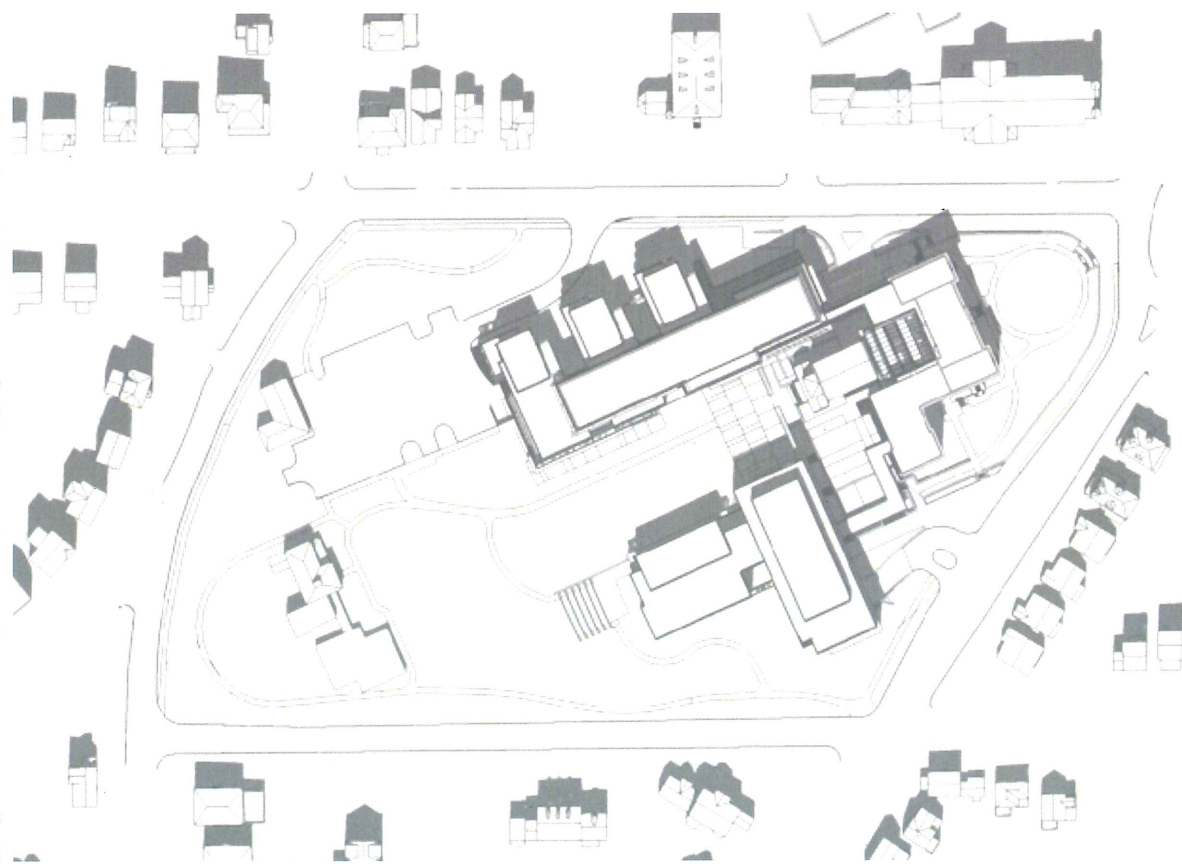
DRAWING NUMBER



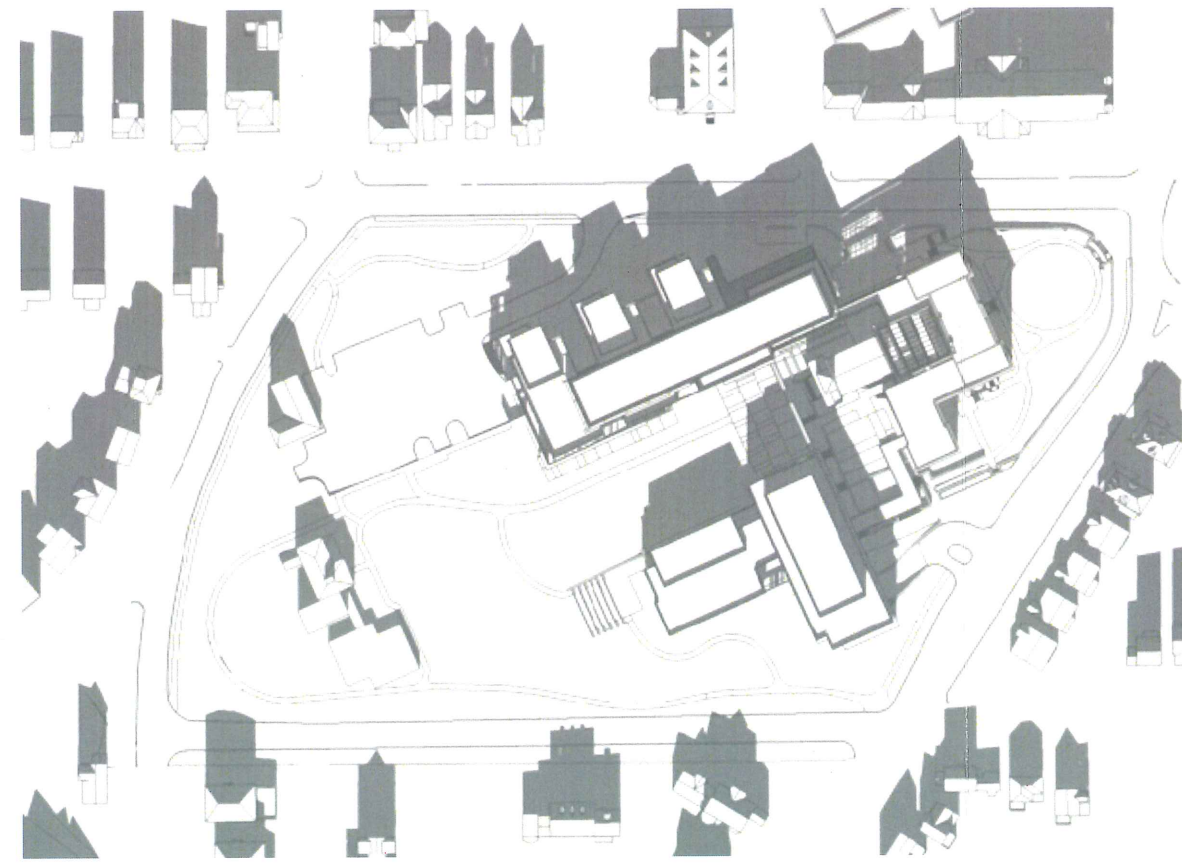
March 20



June 20



September 20



December 20



American University
4400 Massachusetts Avenue, NW
Washington, DC 20016-6200

AMERICAN UNIVERSITY
Tenley Campus- Proposed
Washington College of Law

SMITHGROUP
architecture engineering interiors planning
SMITHGROUP, INC.
1850 K STREET NW
SUITE 250
WASHINGTON, DC 20006
T 202 842.2100
F 202 974.4500
www.smithgroup.com

AERIAL VIEW

DRAWING TITLE

November 7, 2011

DATE

N.T.S.

PROJECT NUMBER

14.0

DRAWING NUMBER



American University
4400 Massachusetts Avenue, NW
Washington, DC 20016-6200

AMERICAN UNIVERSITY
Tenley Campus- Proposed
Washington College of Law

SMITHGROUP

architecture engineering interiors planning

SMITHGROUP, INC.
1850 K STREET NW
SUITE 250
WASHINGTON, DC 20006
T 202 842 2100
F 202 974 4500
www.smithgroup.com



**VIEW FROM
TENLEY CIRCLE**

DRAWING TITLE

November 7, 2011

DATE

N.T.S.

PROJECT NUMBER

15.0

DRAWING NUMBER



American University
4400 Massachusetts Avenue, NW
Washington, DC 20016-6200

AMERICAN UNIVERSITY
Tenley Campus- Proposed
Washington College of Law

SMITHGROUP
architecture engineering interiors planning
SMITHGROUP, INC.
1850 K STREET NW
SUITE 250
WASHINGTON, DC 20006
T 202 842 2100
F 202 974 4500
www.smithgroup.com

YUMA ENTRY VIEW

DRAWING TITLE
November 7, 2011
DATE
N.T.S.
PROJECT NUMBER
16.0
DRAWING NUMBER



American University
4400 Massachusetts Avenue, NW
Washington, DC 20016-6200

AMERICAN UNIVERSITY
Tenley Campus- Proposed
Washington College of Law

SMITHGROUP
architecture engineering interiors planning
SMITHGROUP, INC.
1850 K STREET NW
SUITE 250
WASHINGTON, DC 20006
T 202 842 2100
F 202 974 4500
www.smithgroup.com

YUMA FACADE VIEW

DRAWING TITLE
November 7, 2011
DATE

N.T.S.

PROJECT NUMBER
DRAWING NUMBER
17.0



American University
4400 Massachusetts Avenue, NW
Washington, DC 20016-6200

AMERICAN UNIVERSITY
Tenley Campus- Proposed
Washington College of Law

SMITHGROUP
architecture engineering interiors planning

SMITHGROUP, INC.
1850 K STREET NW
SUITE 250
WASHINGTON, DC 20006
T 202 842 2100
F 202 974 4500
www.smithgroup.com



PROJECT NORTH

NEBRASKA ENTRY
AERIAL VIEW

DRAWING TITLE

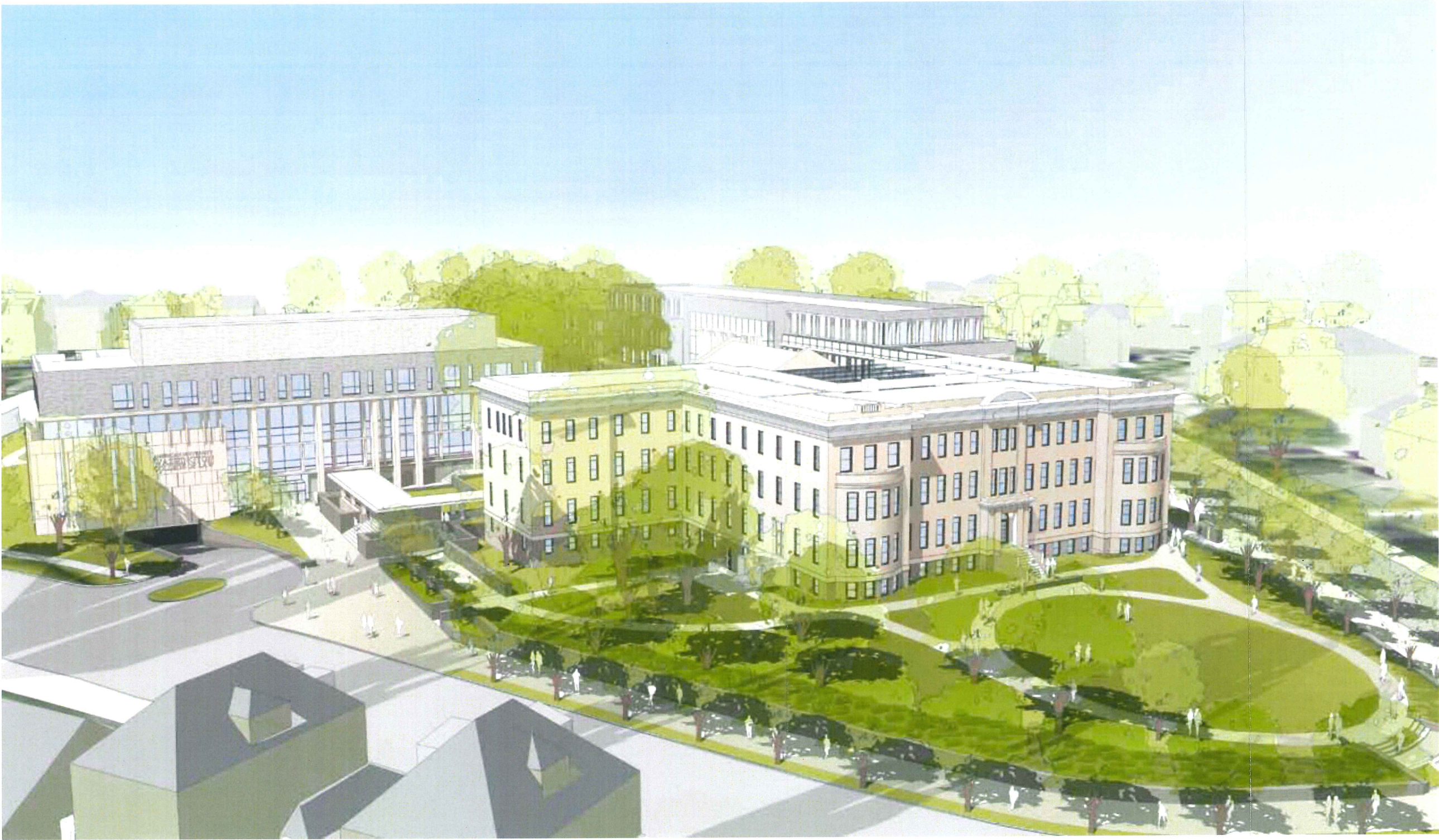
DATE
N.T.S.



SCALE

PROJECT NUMBER
18.0

DRAWING NUMBER





American University
4400 Massachusetts Avenue, NW
Washington, DC 20016-6200

AMERICAN UNIVERSITY
Tenley Campus- Proposed
Washington College of Law

SMITHGROUP
architecture engineering interiors planning
SMITHGROUP, INC.
1850 K STREET NW
SUITE 250
WASHINGTON, DC 20006
T 202 842 2100
F 202 974 4500
www.smithgroup.com

**NEBRASKA ENTRY
VIEW**

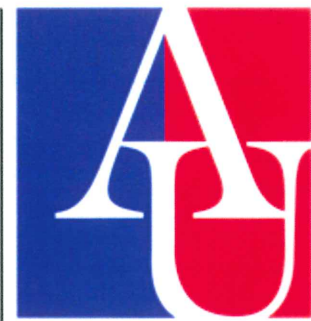
DRAWING TITLE
November 7, 2011

DATE
N.T.S.

PROJECT NUMBER
19.0

DRAWING NUMBER





American University
4400 Massachusetts Avenue, NW
Washington, DC 20016-6200

AMERICAN UNIVERSITY
Tenley Campus- Proposed
Washington College of Law

SMITHGROUP
architecture engineering interiors planning
SMITHGROUP, INC
1850 K STREET NW
SUITE 250
WASHINGTON, DC 20006
T 202 842 2100
F 202 974 4500
www.smithgroup.com

**NEBRASKA ENTRY
VIEW**

DRAWING TITLE
November 7, 2011

DATE
N.T.S.

PROJECT NUMBER
20.0
DRAWING NUMBER



American University
4400 Massachusetts Avenue, NW
Washington, DC 20016-6200

AMERICAN UNIVERSITY
Tenley Campus- Proposed
Washington College of Law

SMITHGROUP

architecture engineering interiors planning

SMITHGROUP, INC.
1850 K STREET NW
SUITE 250
WASHINGTON, DC 20006
T 202 842 2100
F 202 974 4500
www.smithgroup.com

**NEBRASKA - WARREN
VIEW**

DRAWING TITLE

November 7, 2011

DATE

N.T.S.

PROJECT NUMBER

21.0

DRAWING NUMBER



American University
4400 Massachusetts Avenue, NW
Washington, DC 20016-6200

AMERICAN UNIVERSITY
Tenley Campus- Proposed
Washington College of Law

SMITHGROUP
architecture engineering interiors planning

SMITHGROUP, INC.
1850 K STREET NW
SUITE 250
WASHINGTON, DC 20006
T 202 842 2100
F 202 974 4500
www.smithgroup.com

**COURTYARD AERIAL
VIEW**

DRAWING TITLE
November 7, 2011

DATE
N.T.S.

PROJECT NUMBER
DRAWING NUMBER
22.0



American University
4400 Massachusetts Avenue, NW
Washington, DC 20016-6200

AMERICAN UNIVERSITY
Tenley Campus- Proposed
Washington College of Law

SMITHGROUP

architecture engineering interiors planning

SMITHGROUP, INC.
1850 K STREET NW
SUITE 250
WASHINGTON, DC 20006
T 202 842 2100
F 202 974 4500
www.smithgroup.com

**COURTYARD VIEW-
DUNBLANE
APPROACH**

DRAWING TITLE

November 7, 2011

DATE

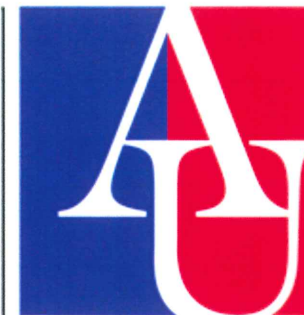
N.T.S.

PROJECT NUMBER

23.0

DRAWING NUMBER





American University
4400 Massachusetts Avenue, NW
Washington, DC 20016-6200

AMERICAN UNIVERSITY
Tenley Campus- Proposed
Washington College of Law

SMITHGROUP
architecture engineering interiors planning
SMITHGROUP, INC.
1850 K STREET NW
SUITE 250
WASHINGTON, DC 20006
T 202 842 2100
F 202 974 4500
www.smithgroup.com

**COURTYARD VIEW-
DUNBLANE FROM
CHAPEL**

DRAWING TITLE

November 7, 2011

DATE

N.T.S.

PROJECT NUMBER

24.0

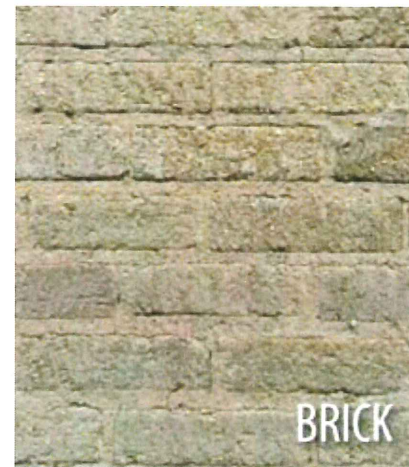
DRAWING NUMBER



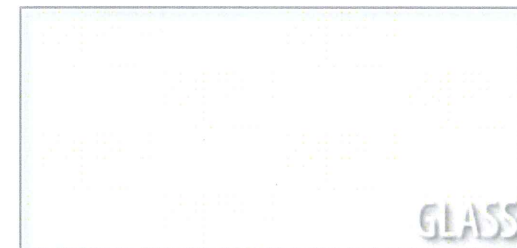
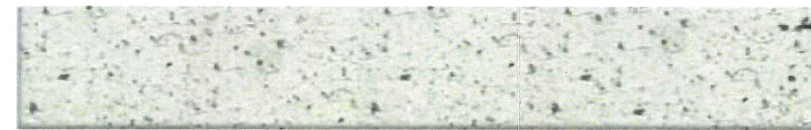
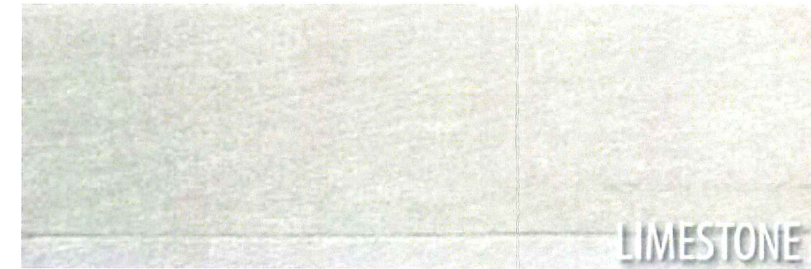
Existing



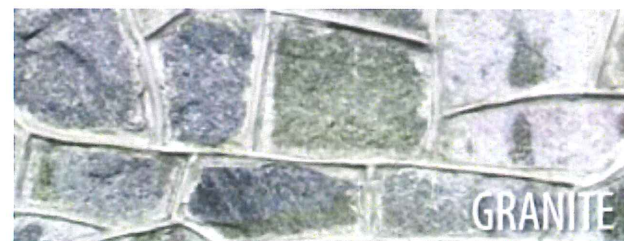
Chapel



Proposed



Sitework



Sitework



American University
4400 Massachusetts Avenue, NW
Washington, DC 20016-6200

AMERICAN UNIVERSITY
Tenley Campus- Proposed
Washington College of Law

SMITHGROUP
architecture engineering interiors planning
SMITHGROUP, INC.
1850 K STREET NW
SUITE 250
WASHINGTON, DC 20006
T 202 842 2100
F 202 974 4500
www.smithgroup.com

MATERIALS

DRAWING TITLE
November 7, 2011
DATE
N.T.S.
PROJECT NUMBER
25.0
DRAWING NUMBER



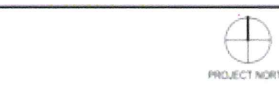
American University
4400 Massachusetts Avenue, NW
Washington, DC 20016-6200

AMERICAN UNIVERSITY
Tenley Campus- Proposed
Washington College of Law

SMITHGROUP
architecture engineering interiors planning
SMITHGROUP, INC.
1850 K STREET NW
SUITE 250
WASHINGTON, DC 20006
T 202 842 2100
F 202 974 4500
www.smithgroup.com



- Legend**
- Instructional Facilities
 - Law Library
 - Administrative Offices
 - Faculty Offices
 - Law Clinics
 - Student Spaces
 - Support Spaces



BUILDING PLANS
LOWER LEVEL FLOOR PLAN

DRAWING TITLE
November 7, 2011
DATE
1"=50'
SCALE
PROJECT NUMBER
26.0
DRAWING NUMBER



American University
 4400 Massachusetts Avenue, NW
 Washington, DC 20016-6200

AMERICAN UNIVERSITY
 Tenley Campus- Proposed
 Washington College of Law

SMITHGROUP
 architecture engineering interiors planning
 SMITHGROUP, INC.
 1850 K STREET NW
 SUITE 250
 WASHINGTON, DC 20006
 T 202 842 2100
 F 202 974 4500
 www.smithgroup.com



- Legend**
- Instructional Facilities
 - Law Library
 - Administrative Offices
 - Faculty Offices
 - Law Clinics
 - Student Spaces
 - Support Spaces



BUILDING PLANS

FIRST FLOOR PLAN

DRAWING TITLE

November 7, 2011

DATE

1"=50'



SCALE

PROJECT NUMBER

27.0

DRAWING NUMBER



American University
4400 Massachusetts Avenue, NW
Washington, DC 20016-6200

AMERICAN UNIVERSITY
Tenley Campus- Proposed
Washington College of Law

SMITHGROUP
architecture engineering interiors planning
SMITHGROUP, INC
1850 K STREET NW
SUITE 250
WASHINGTON, DC 20006
T 202.842.2100
F 202.974.4500
www.smithgroup.com



BUILDING PLANS

SECOND FLOOR PLAN

DRAWING TITLE

November 7, 2011

DATE

1"=50'

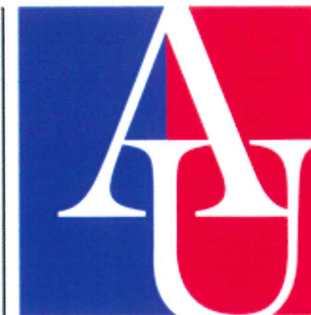


SCALE

PROJECT NUMBER

28.0

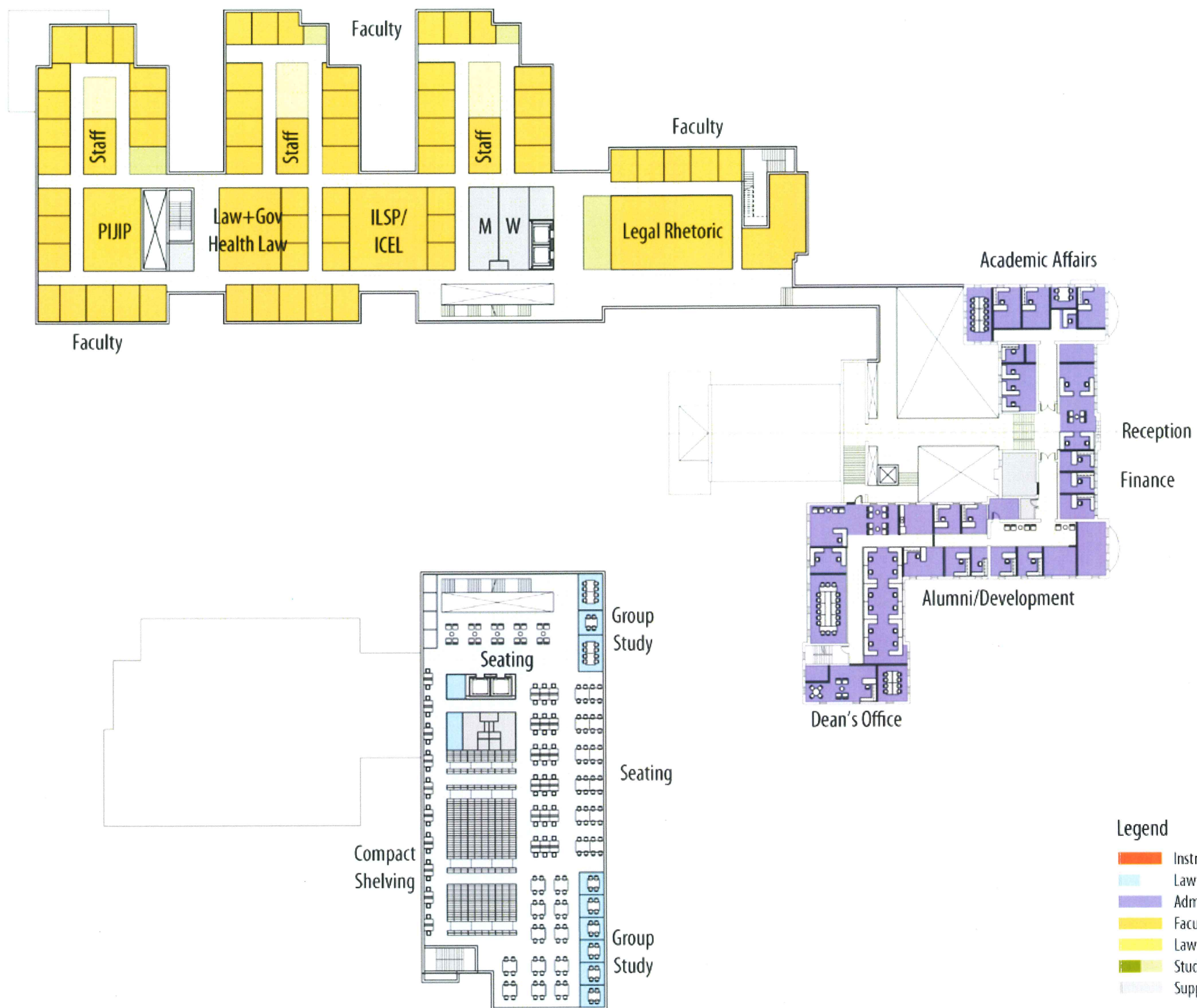
DRAWING NUMBER



American University
4400 Massachusetts Avenue, NW
Washington, DC 20016-6200

AMERICAN UNIVERSITY
Tenley Campus- Proposed
Washington College of Law

SMITHGROUP
architecture engineering interiors planning
SMITHGROUP, INC.
1850 K STREET NW
SUITE 250
WASHINGTON, DC 20006
T 202 842 2100
F 202 974 4500
www.smithgroup.com



Legend

- Instructional Facilities
- Law Library
- Administrative Offices
- Faculty Offices
- Law Clinics
- Student Spaces
- Support Spaces



BUILDING PLANS

THIRD FLOOR PLAN

DRAWING TITLE

November 7, 2011

DATE

1"=50'



SCALE

PROJECT NUMBER

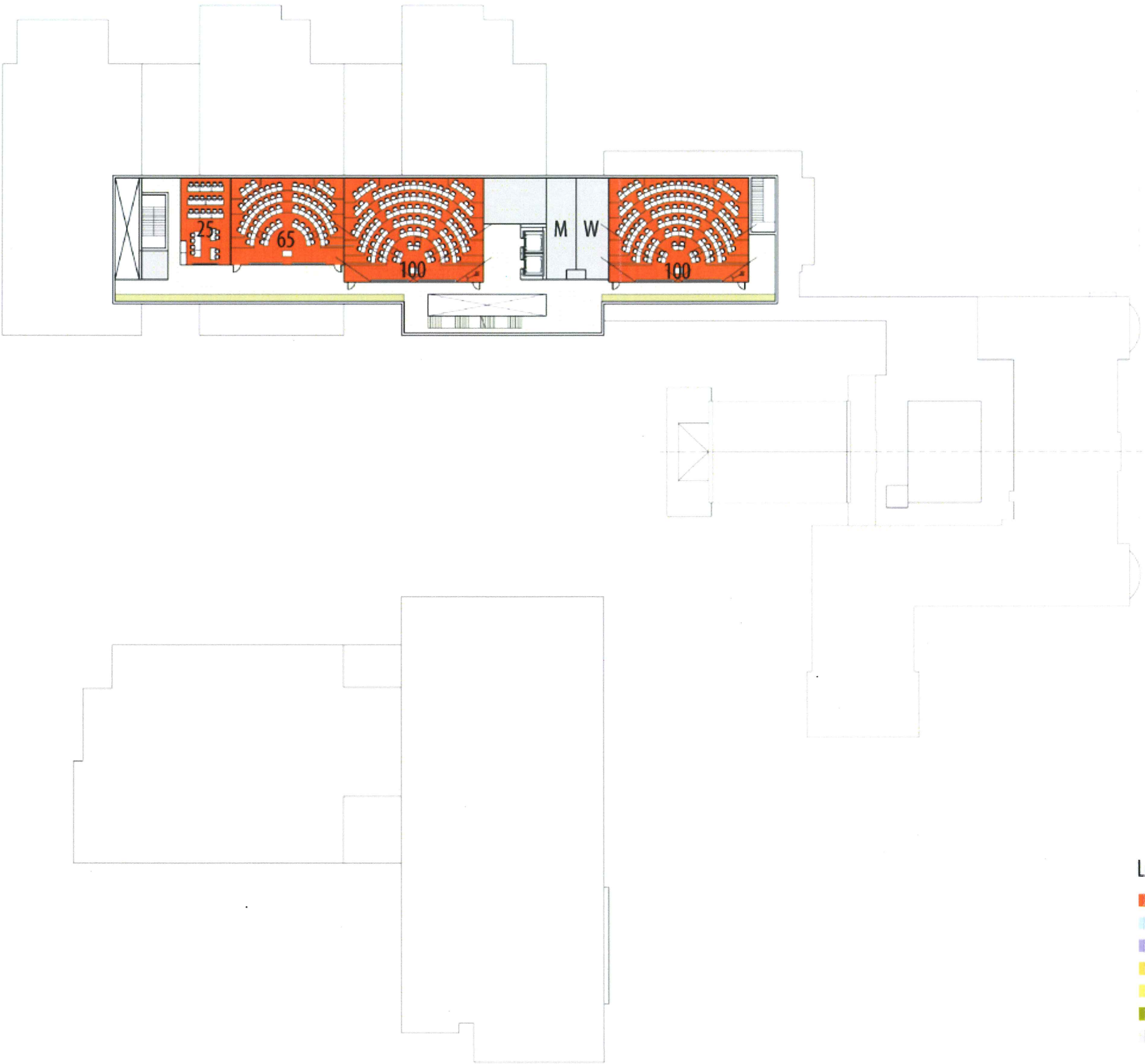
29.0

DRAWING NUMBER



American University
4400 Massachusetts Avenue, NW
Washington, DC 20016-6200

AMERICAN UNIVERSITY
Tenley Campus- Proposed
Washington College of Law



SMITHGROUP
architecture engineering interiors planning
SMITHGROUP, INC.
1850 K STREET NW
SUITE 250
WASHINGTON, DC 20006
T 202.842.2100
F 202.974.4500
www.smithgroup.com

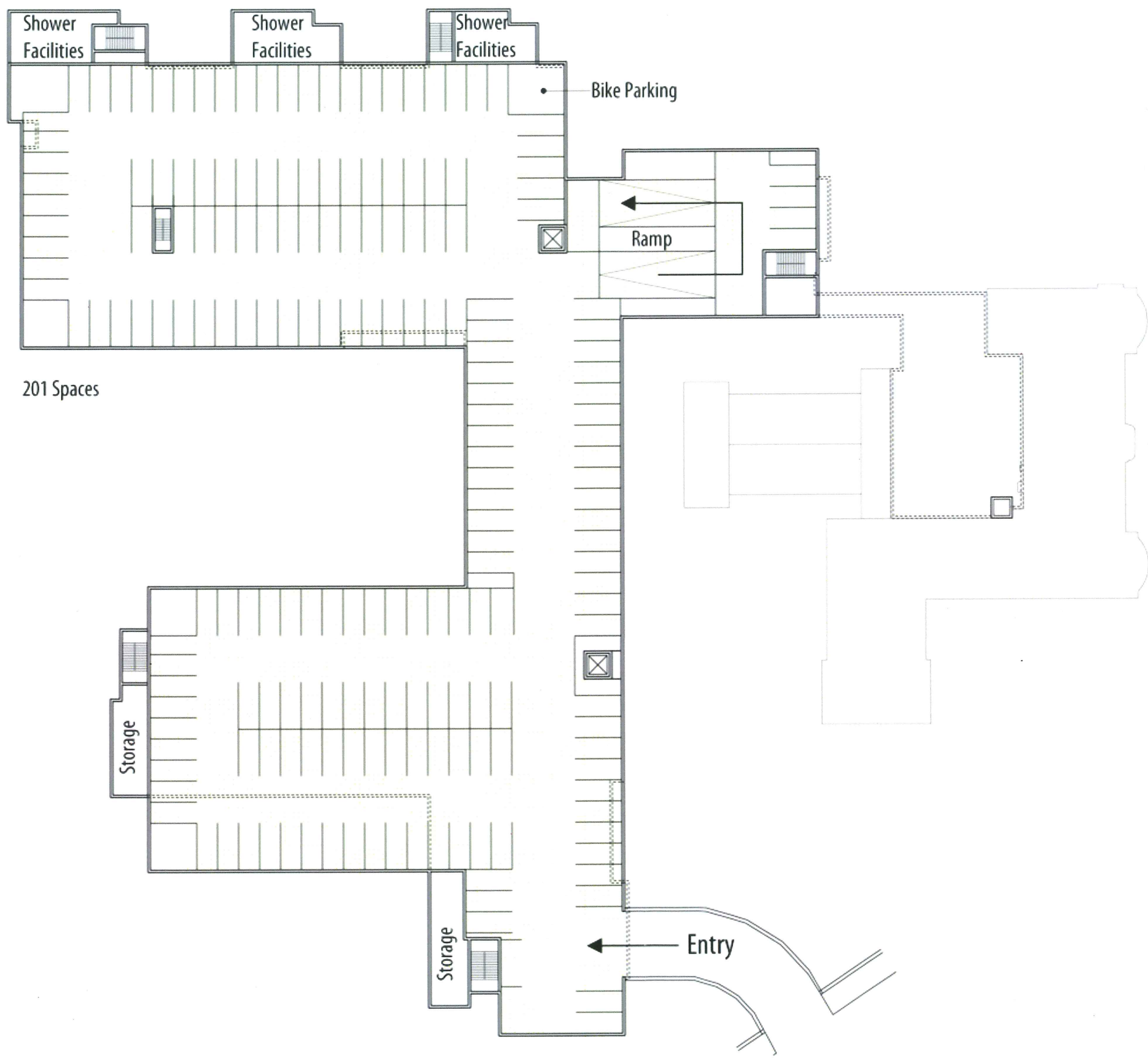


PROJECT NORTH

BUILDING PLANS
FOURTH FLOOR PLAN

- Legend**
- Instructional Facilities
 - Law Library
 - Administrative Offices
 - Faculty Offices
 - Law Clinics
 - Student Spaces
 - Support Spaces

DRAWING TITLE
November 7, 2011
DATE
1"=50'
SCALE
PROJECT NUMBER
30.0
DRAWING NUMBER



American University
 4400 Massachusetts Avenue, NW
 Washington, DC 20016-6200

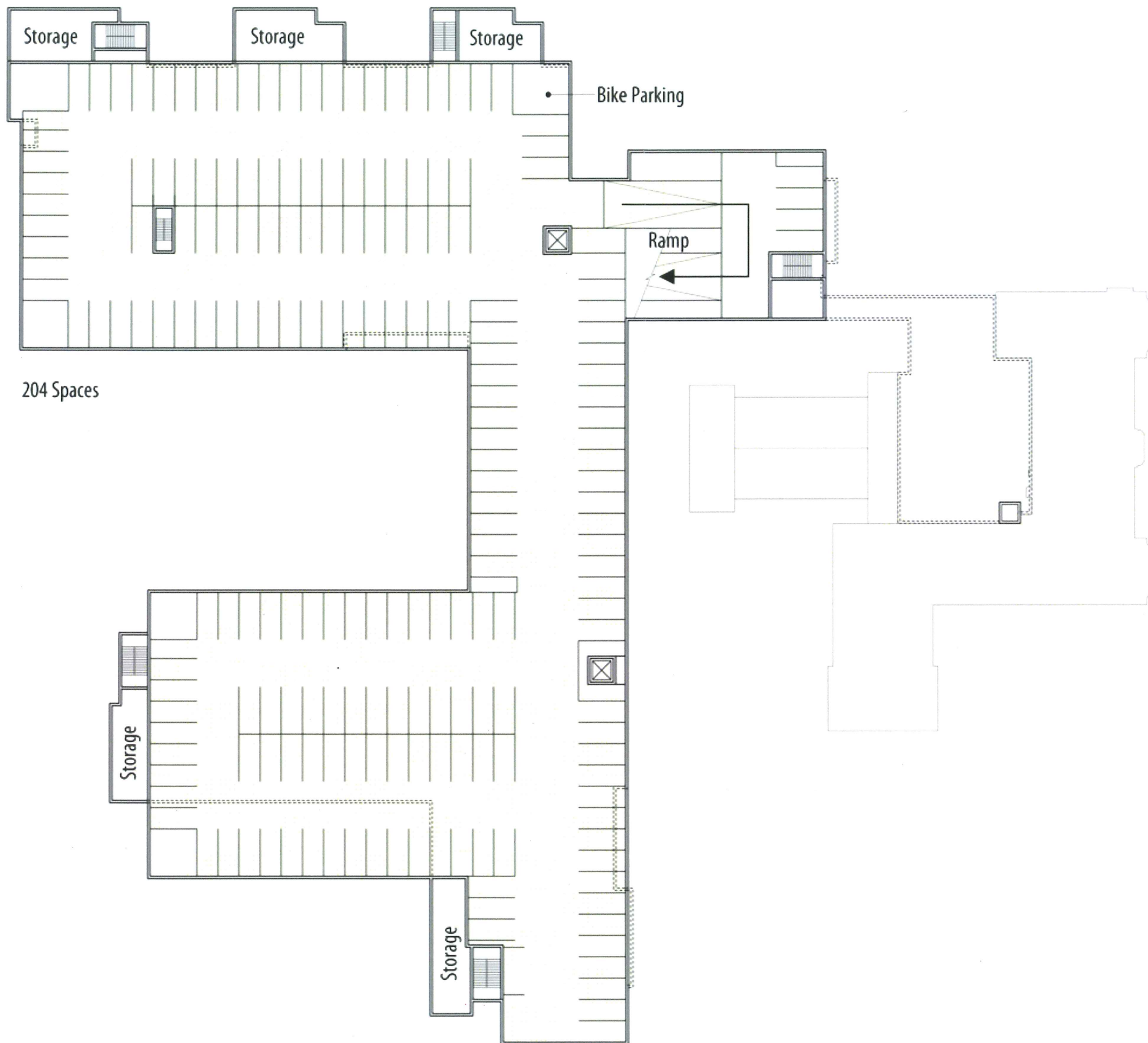
AMERICAN UNIVERSITY
 Tenley Campus- Proposed
 Washington College of Law

SMITHGROUP
 architecture engineering interiors planning
 SMITHGROUP, INC.
 1850 K STREET NW
 SUITE 250
 WASHINGTON, DC 20006
 T 202 842 2100
 F 202 974 4500
 www.smithgroup.com



BUILDING PLANS
FIRST PARKING LEVEL
FLOOR PLAN

DRAWING TITLE
 November 7, 2011
 DATE
 1"=50'
 SCALE
 PROJECT NUMBER
 31.0
 DRAWING NUMBER



Storage

Storage

Storage

Bike Parking

Ramp

204 Spaces

Storage

Storage



American University
4400 Massachusetts Avenue, NW
Washington, DC 20016-6200

AMERICAN UNIVERSITY
Tenley Campus- Proposed
Washington College of Law

SMITHGROUP
architecture engineering interiors planning
SMITHGROUP, INC.
1850 K STREET NW
SUITE 250
WASHINGTON, DC 20006
T 202 842 2100
F 202 974 4500
www.smithgroup.com



BUILDING PLANS
SECOND PARKING
LEVEL
FLOOR PLAN

DRAWING TITLE
November 7, 2011

DATE
1"=50'



SCALE

PROJECT NUMBER

32.0

DRAWING NUMBER