

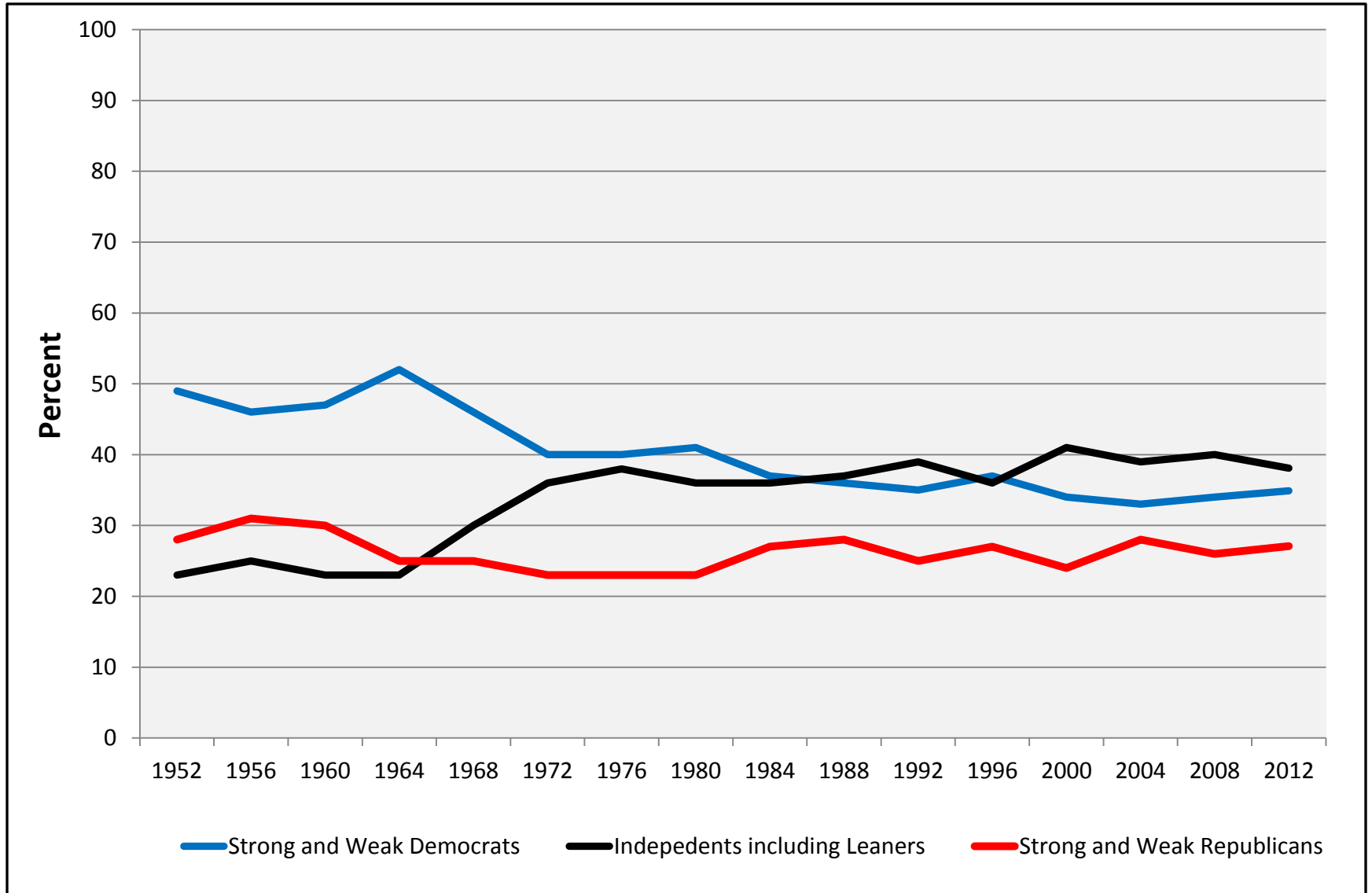
Party Sorting as the Underpinning of Polarized Politics

In this essay I have argued that the fundamental cause of today's climate of incivil politics is the sorting of politically active Americans into parties that have grown much more homogeneous than they were in the mid-20th Century. Particular interests (other than Wall Street) appear to receive protection from only one of the two parties. Particular values seem to be defended by only one of the two parties. And particular kinds of people seem to receive a sympathetic hearing by only one of the two parties. The consequence is that the actions considered by government bodies are more likely to present stark choices today than in some earlier, less polarized, more civil eras. In consequence, elections matter more. As the stakes rise, civility falls.

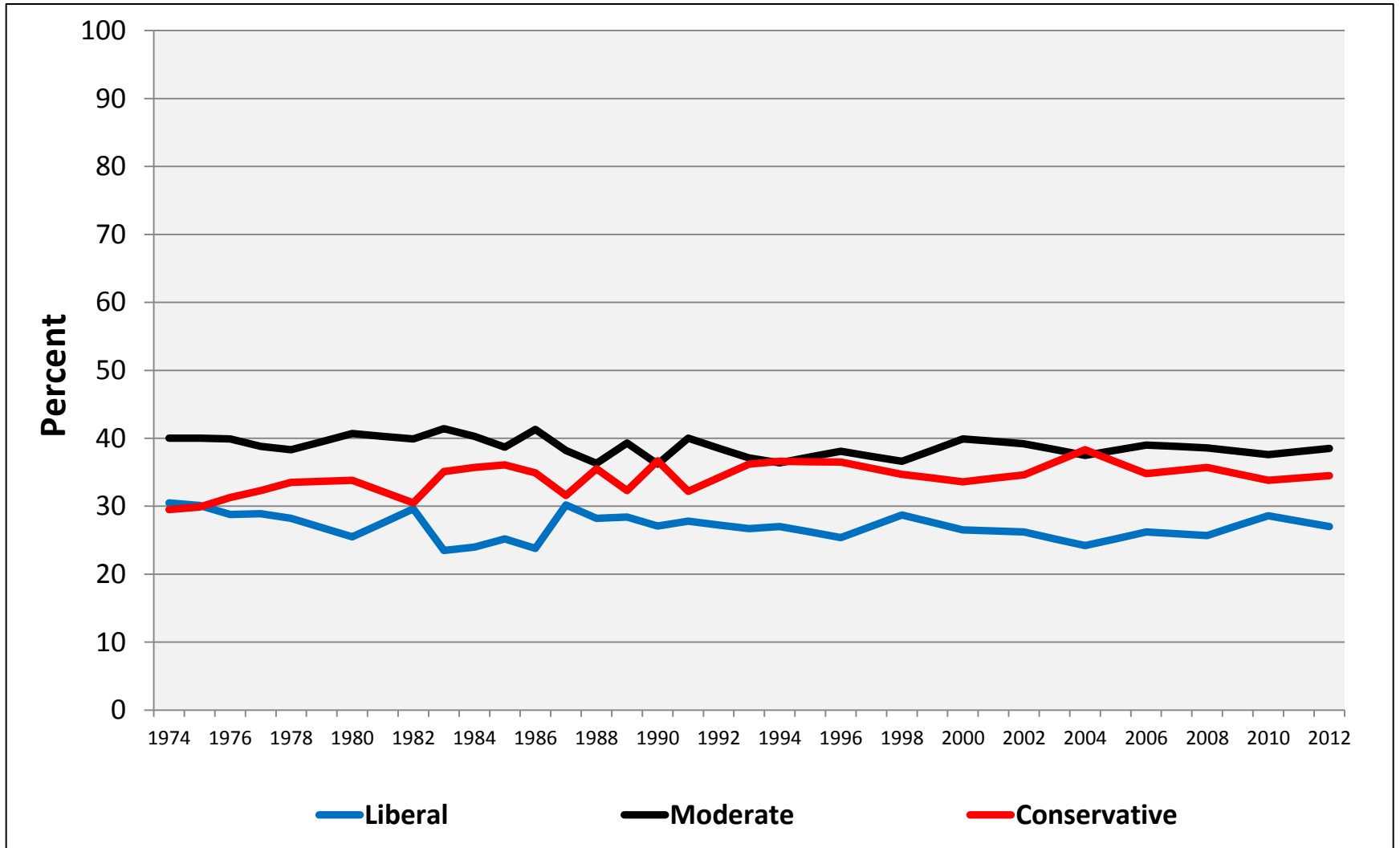
Polarization

	<u>Democrats</u>	<u>Independents</u>	<u>Republicans</u>
Time 1	60 libs 25 mods 15 conservs	50 moderates	15 libs 25 mods 60 conservs
Time 2	125 libs	--	125 conservs

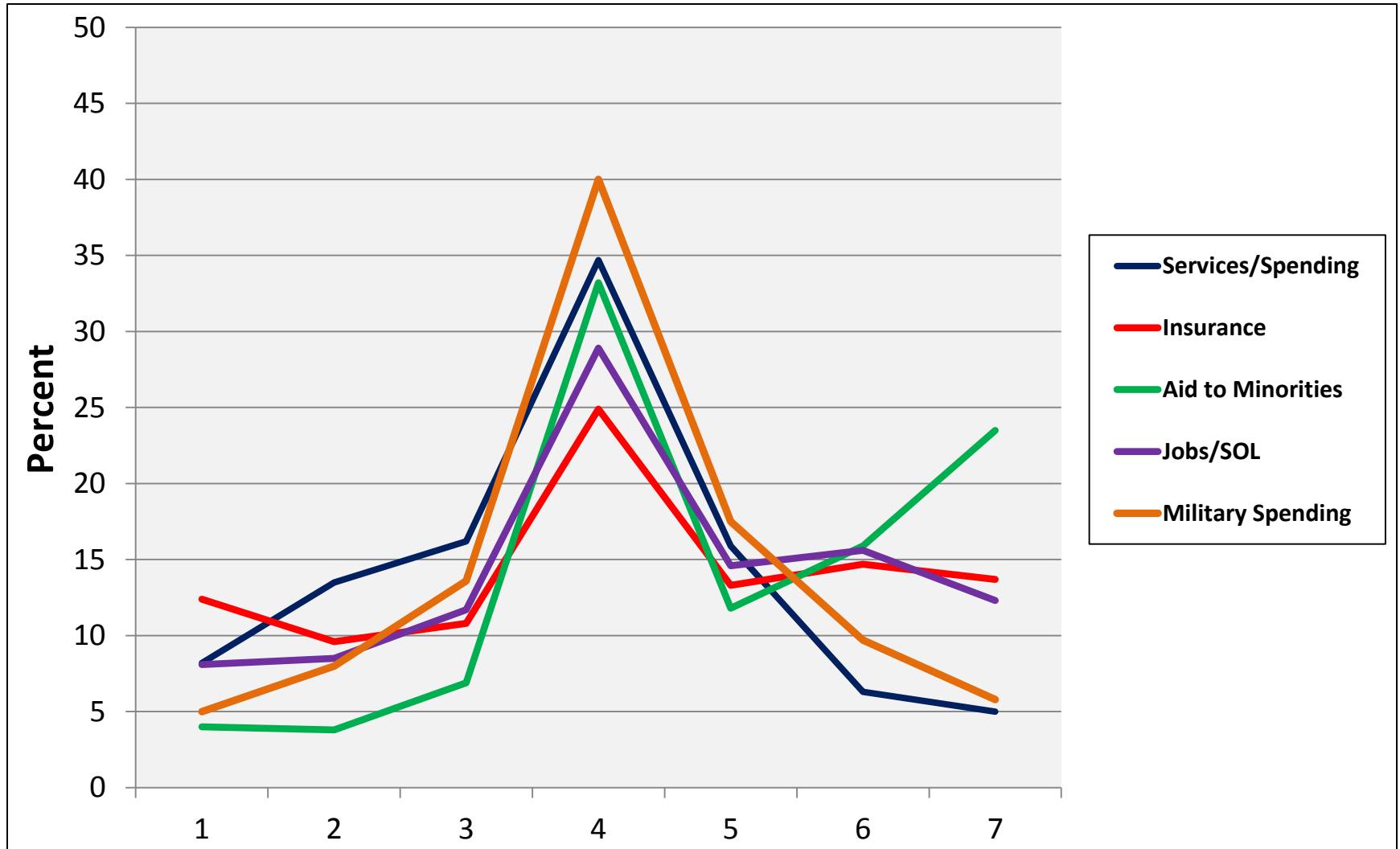
Partisanship Not Polarized



Ideology Not Polarized



Specific Issues not Polarized: 2012

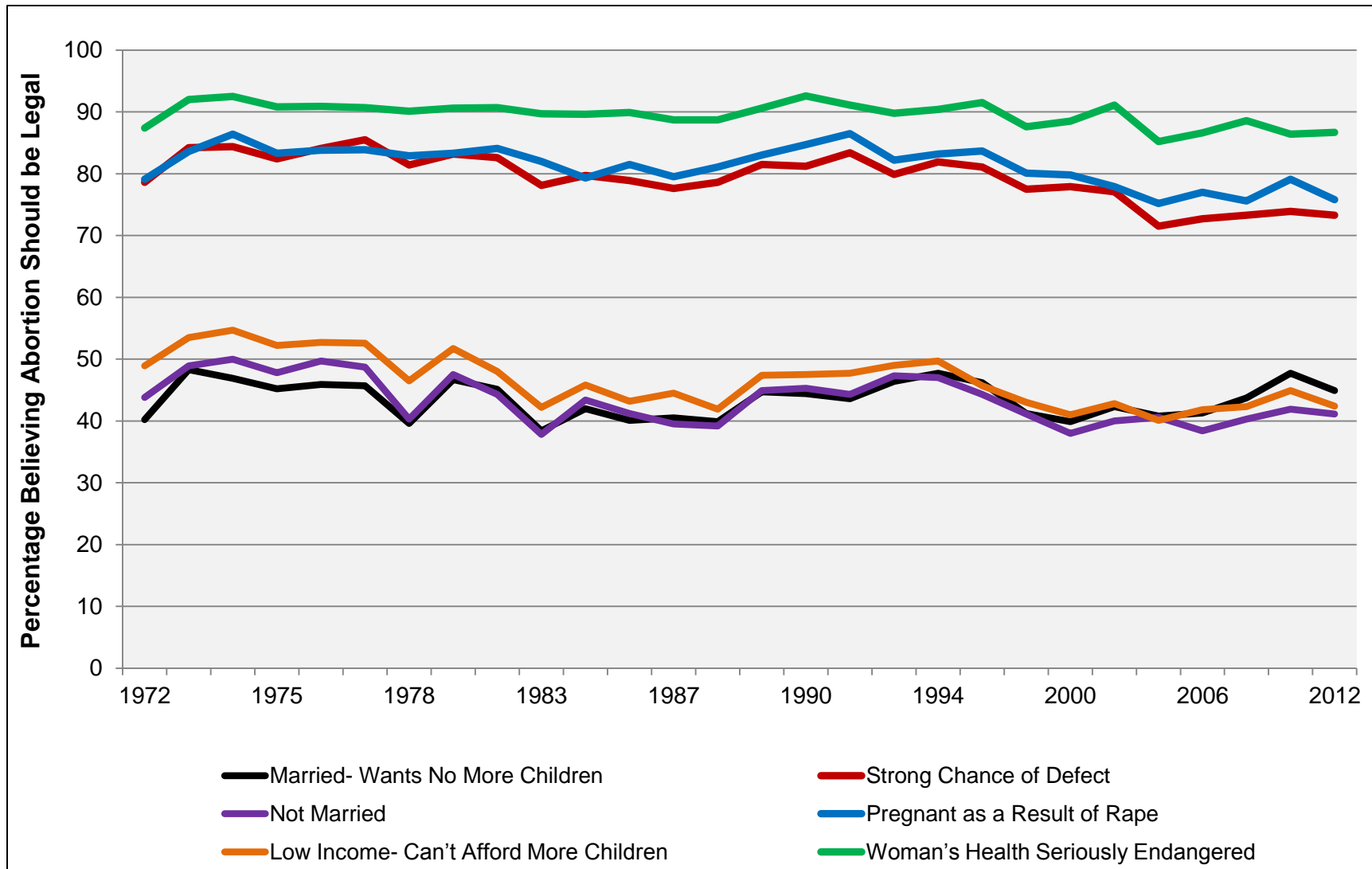


Party Sorting

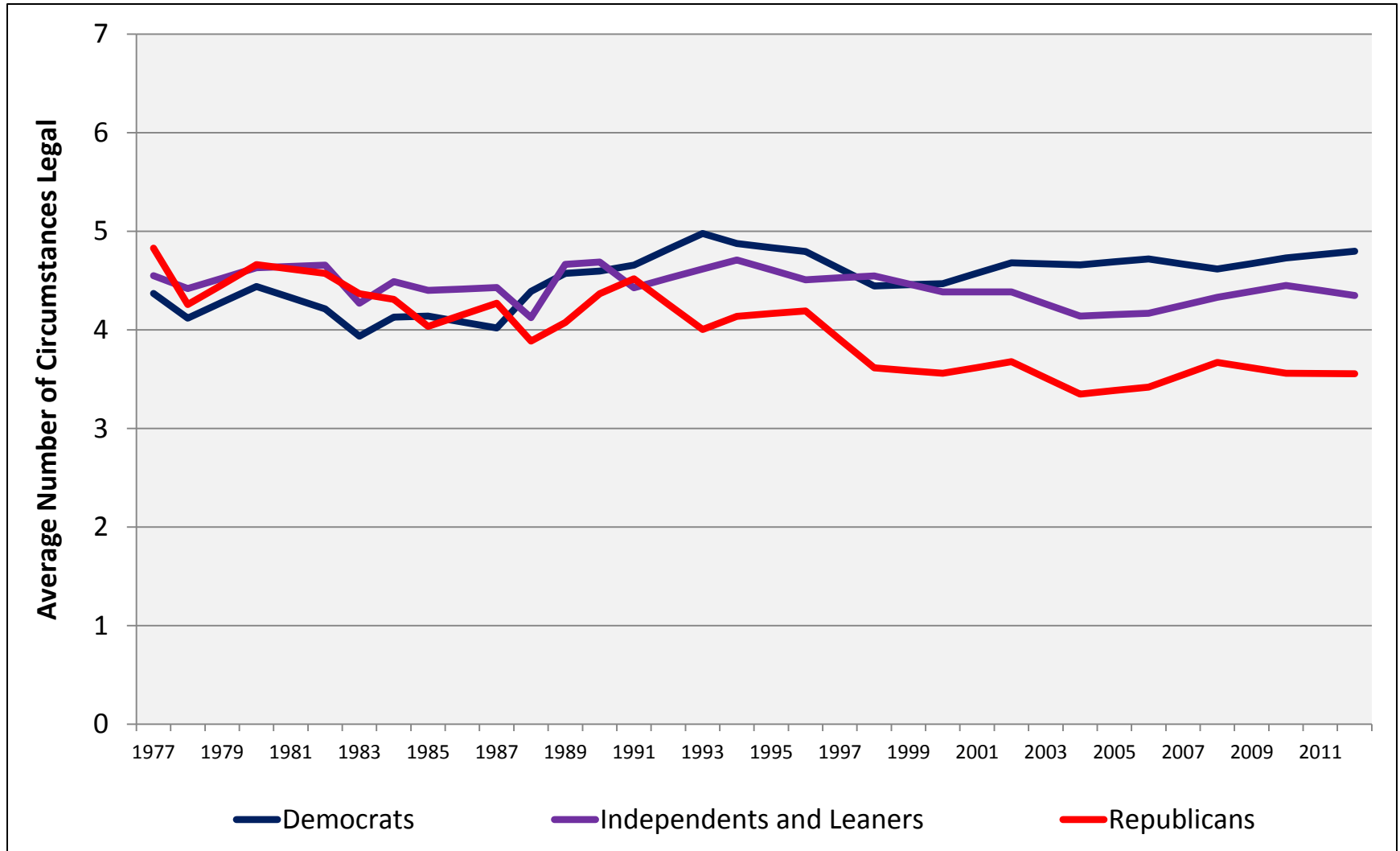
	<u>Democrats</u>	<u>Independents</u>	<u>Republicans</u>
Time 1	60 libs 25 mods 15 conservs	50 moderates	15 libs 25 mods 60 conservs
Time 2	75 libs 25 mods	50 moderates	75 conservs 25 mods

Should Abortion be Legal?

(GSS 1972- 2012)



Partisans in the General Public Are Sorting on Abortion



2012 ANES: Should Abortion Be Legal?

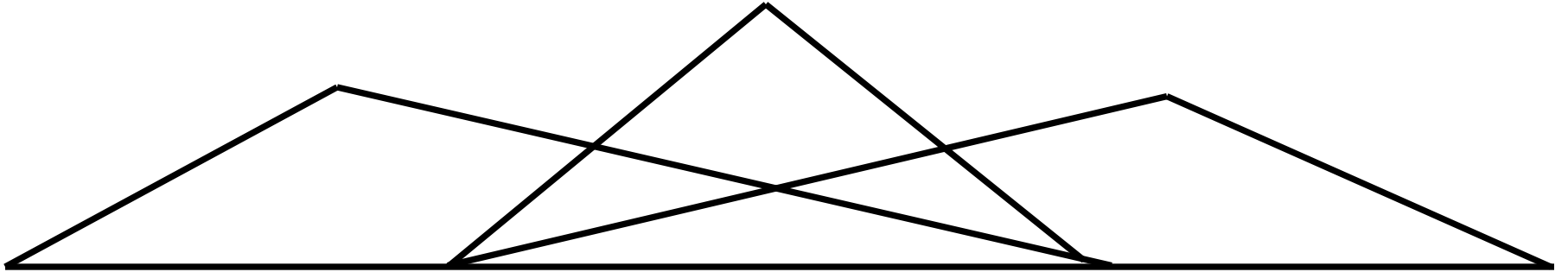
	<u>Favor</u>	<u>Oppose</u>
Woman's Choice	37%	38
Threat to Mother's Life	68	10
Pregnancy from rape	66	14
Serious birth defect	48	23
Pregnancy from incest	48	24
Threat to mother's health	43	29
Financial hardship	24	50
Not the right sex you want	8	74

Party Sorting

D

I

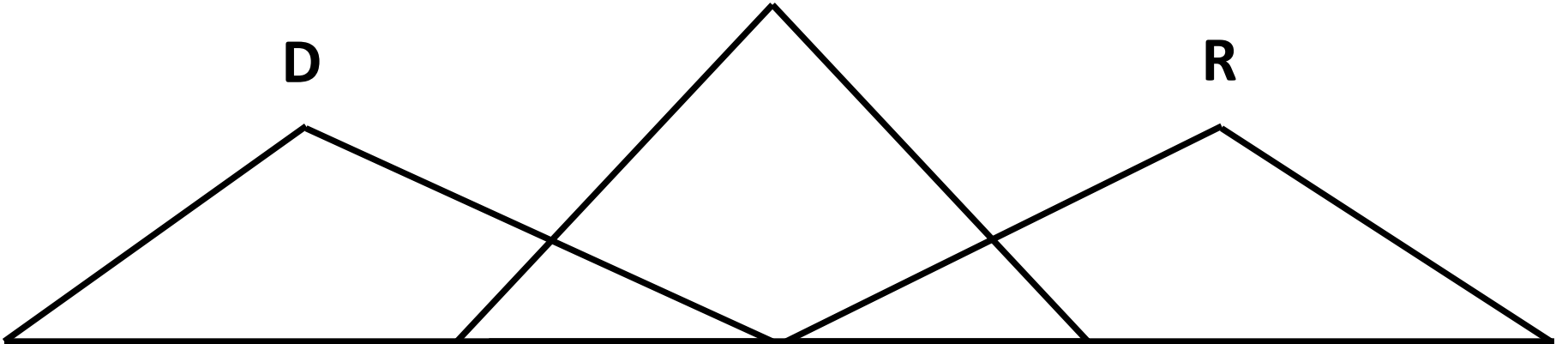
R



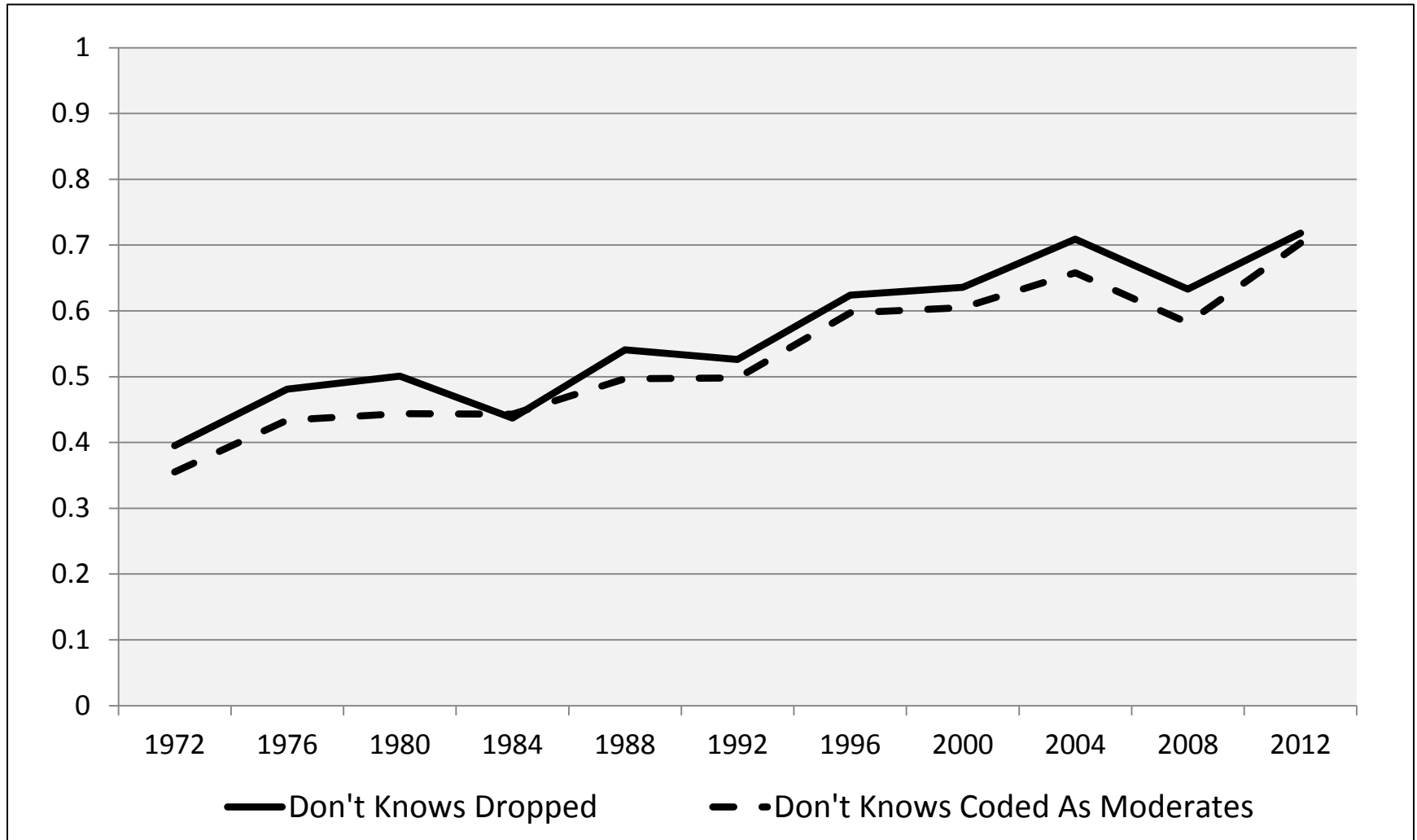
D

I

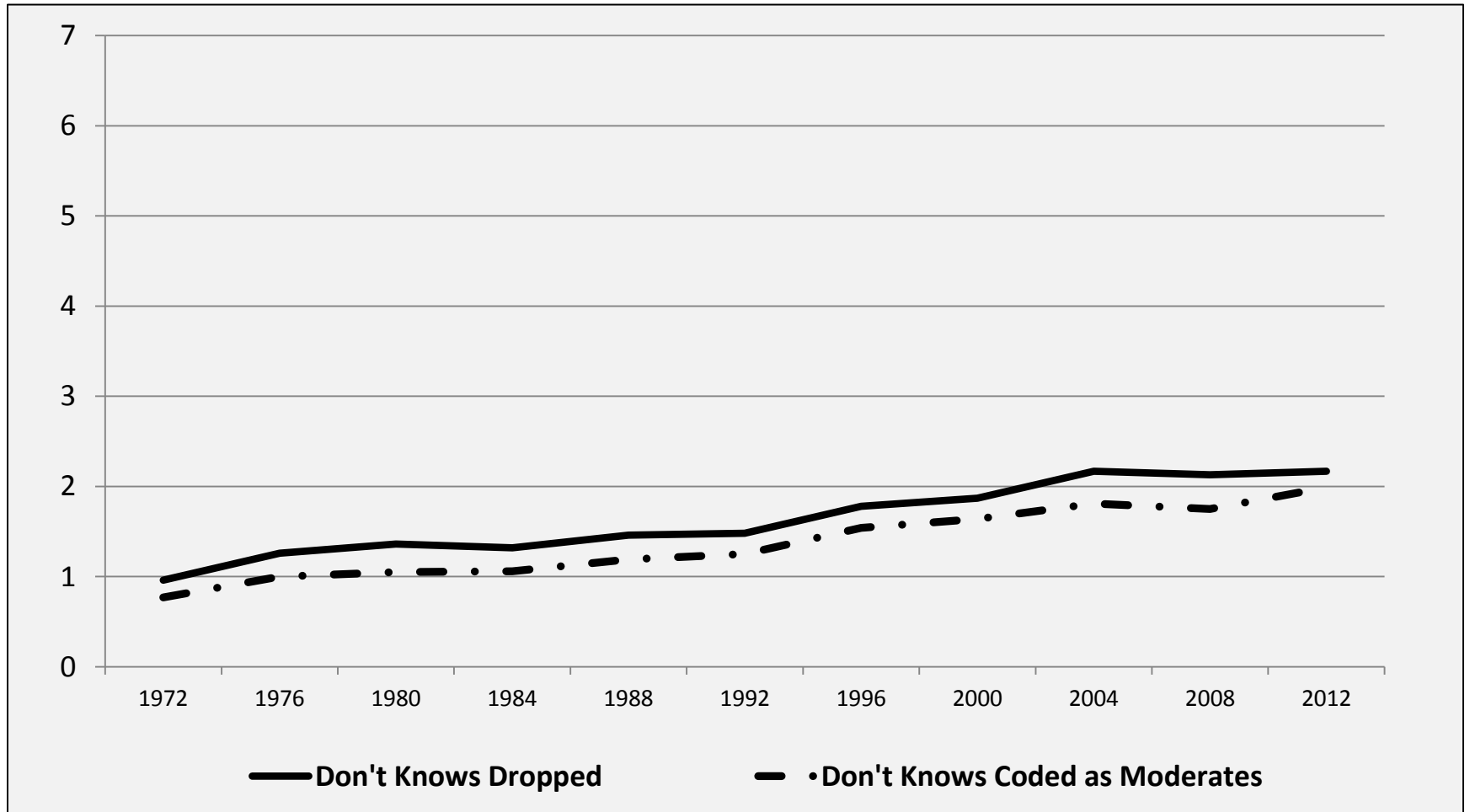
R



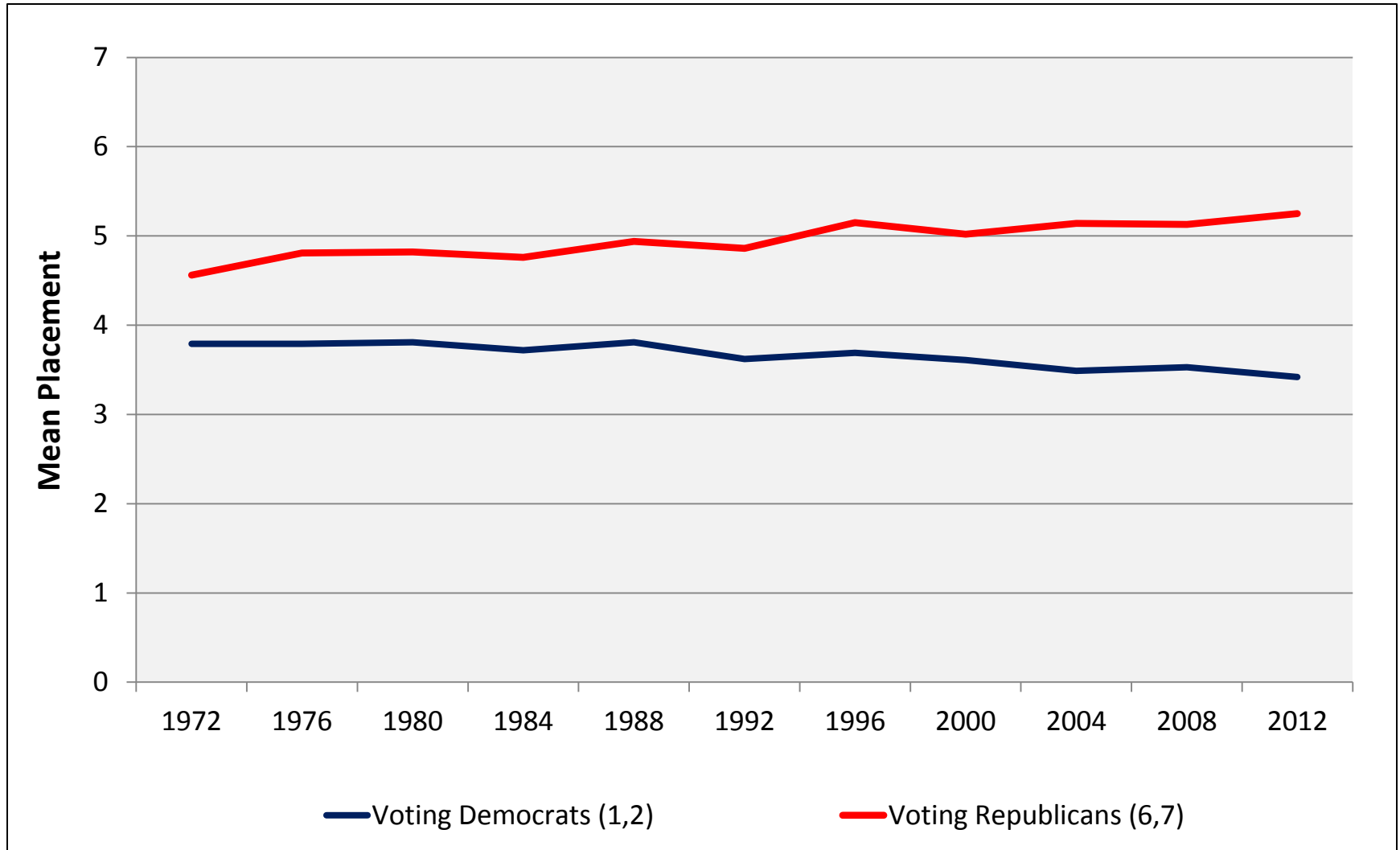
Correlation between PID and Lib-Con (Democrats and Republicans who Voted)



Difference in Means on the Lib-Con Scale (Dems v. Reps who voted)



Symmetric Separation on the Lib-Con Scale



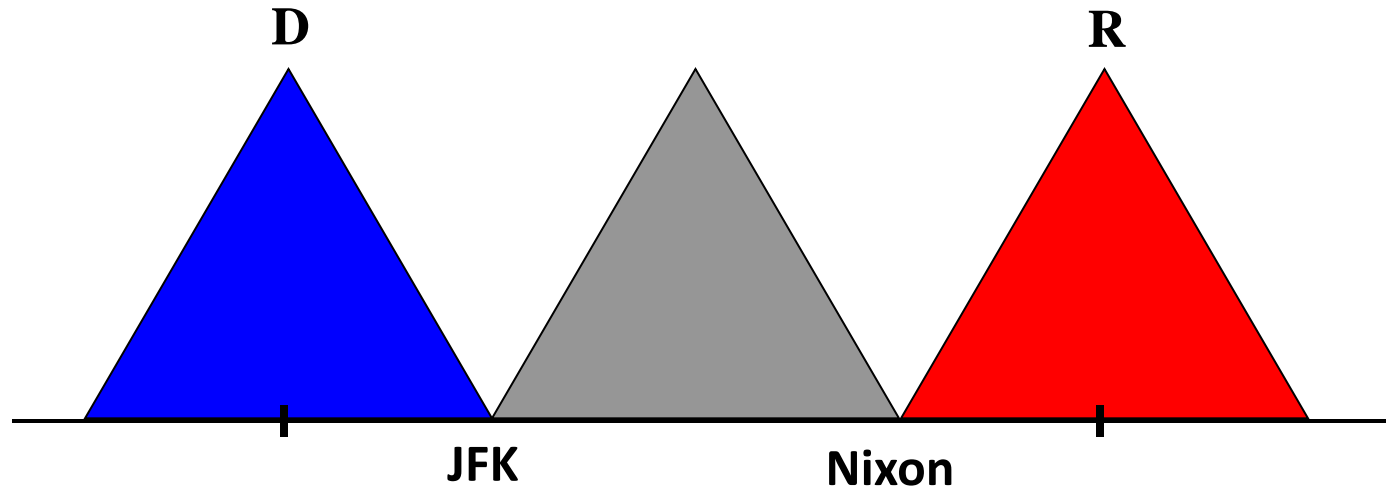
Party Sorting and ...

	Adj. R ²
Presidential Approval:	
Correlation measure	.49
Distance measure	.34
Republican Candidate Rating	
Correlation measure	.30
Distance measure	.36
Democratic Candidate Rating	
Correlation measure	.83
Distance measure	.74
Split Ticket Voting	
Correlation measure	.90
Distance measure	.91

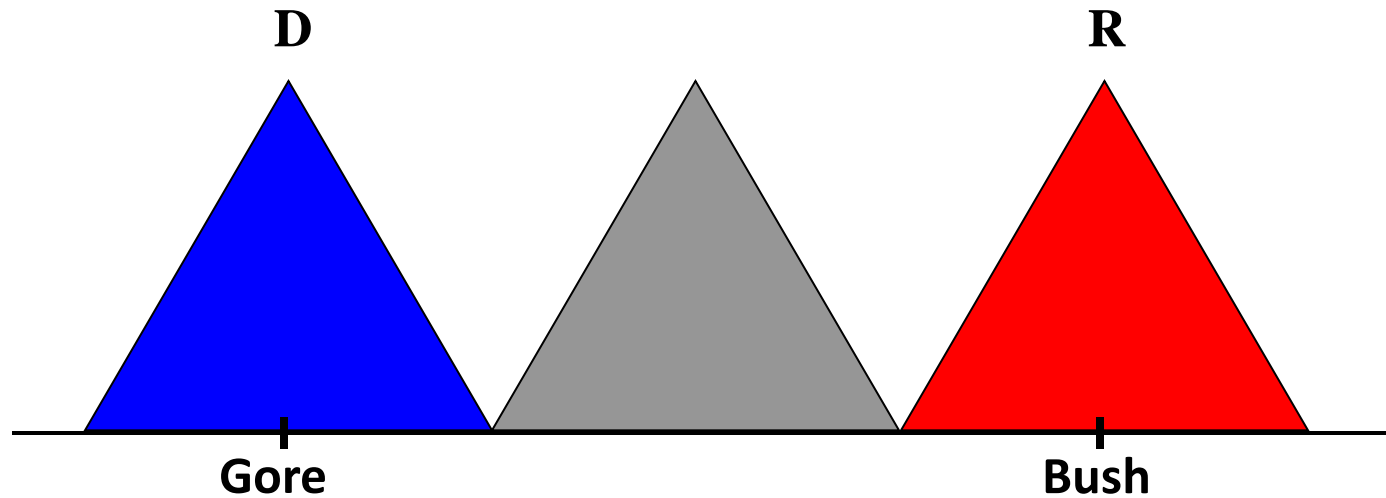
Finish

Polarization of Choices/Evaluations

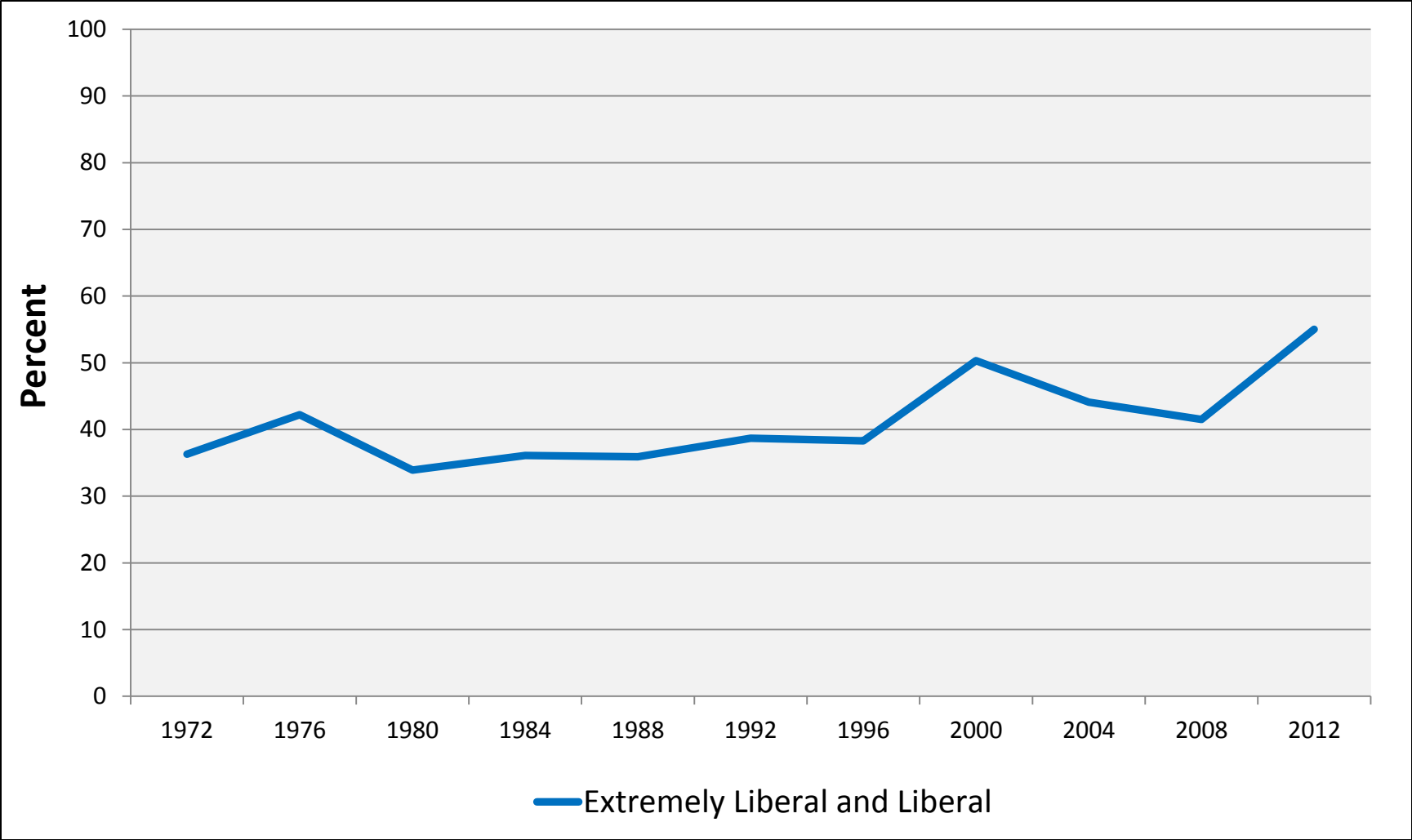
Centrist Strategy



Base Strategy



Ideological Placement: Democratic Party



Source: ANES. Face-to-Face respondents only

Ideological Placement: Republican Party

